

Racism in Nottingham  
City  
and County

**Common Monitoring Project  
Annual Report  
2005**

## Racist Incident Definition

The definition of a racist incident that should be used by all agencies is that recommended by the Report of the Stephen Lawrence Enquiry.

**"A racist incident is any incident which is perceived to be racist by the victim or any other person."**

"The purpose of this definition is not to prejudge the question of whether a perpetrator's motive was racist or not; that may have to be proved if, for instance, the perpetrator is to be charged with a racially aggravated offence. The purpose of the definition is rather to ensure that investigations take into full account of the possibility of a racist dimension to the incident and that the statistics of such incidents are collected on a uniform basis."

(Home Office Code of Practice on reporting and recording racist incidents in response to recommendation 15 of the Stephen Lawrence Inquiry Report)

## Content

Foreword	Page 3
Summary of Findings	Page 4
Areas of Concern	Page 5
Legal Responsibilities	Page 5
Reporting Centres	Page 6
Introduction	Page 7
Data/Information Presented	Page 7
Racist Incidents Reported per Year	Page 8
Racist Incident Local Authority	Page 8
Place of Incidents	Page 9
Allegations	Page 9
Time of Incidents	Page 10
The Victims of Racism	Page 10
The Alleged Offenders	Page 11
Ashfield	Page 12
Bassetlaw	Page 16
Broxtowe	Page 20
Gedling	Page 24
Mansfield	Page 28
Newark and Sherwood	Page 32
Rushcliffe	Page 36
Nottingham	Page 40
Nottinghamshire Courts	Page 46
Racist Incidents Reported by Schools	Page 47
Agencies Joining the Common Monitoring Project	Page 51
Training	Page 52
Further Information	Page 52

## Foreword

It is with great pleasure that I present to you our tenth annual report and, as always, I wish to express our appreciation to the Nottingham City and County Council for their financial support, the Steering Group and participating agencies for their contribution and support without which, a multi-agency co-ordinated response to racism would not be possible.

We trust this report will be well received and acted upon in line with the recommendations of the Stephen Lawrence Enquiry Report and the Race Relations Amendment Act 2000. It is imperative that the information contained in this report is not just 'shelved' or become an agenda item for a 'one off' meeting, but more proactively, be integrated into all public bodies' Race Equality Schemes, policies and action plans to ensure they are not just giving 'lip service' when tackling racism. Instead, issues of tackling racism should be interwoven into all that we say and do. All public bodies must clearly demonstrate their legal compliance, as outline in the Race Relations Amendment Act 2000 i.e. to ensure that all public bodies regularly report and record racial harassment incidents. This information should then be passed to the Common Monitoring Project for monitoring and analysis purposes.

A trend within the report highlights that, despite a large number of agencies being affiliated to the Common Monitoring Project, only a small number of them report racist incidents to the project, therefore, racist incidents are under-reported. These organisations include schools, local authority departments and Primary Care Trusts across Nottinghamshire.

The report illustrates that, to tackle incidents of racism effectively, it requires an active coming together of the various statutory, public and voluntary bodies to work together to fulfil the aim of increasing reporting, supporting victims and taking effective action against perpetrators. At present only the 'usual suspects' are actively engaged with the project despite the legal responsibility placed on us all.

The future offers new challenges for the project. It needs to continue its work in raising awareness of racism and encouraging agencies to report and record incidents. The Government has made known its intention to create a single equality body detailed in the White Paper "Fairness for All - New Unitary Commission for Equality and Human Rights (CEHR). We believe the project needs to move with the times and expand its remit to cover all hate incidents and crimes. This will require additional funding and presents a new challenge for 2006.

Afzal Sadiq  
Chief Executive Officer

## Summary of Findings

### In 2005

- 1916 separate racist incidents were reported to the participating agencies during 2005. This is a 2% increase on 2004.
- Reported incidents increased in all local authority areas except Newark & Sherwood and Nottingham.
- Over 1700 people were the direct victims of racist incidents during 2005.
- The ethnic grouping profile of victims has changed over the 10 year life of the project reflecting changes in the ethnic mix of the City and County.
- Over 2400 different people were alleged to have instigated racist incidents.
- 28% of victims suffered at least one repeat incident during 2005 and 9% of the alleged offenders are known to have offended for at least the second time during 2005.
- 43% of the alleged offenders are young people aged 17 years or under.

### Criminal Justice

- Racist incidents, including non-crime incidents, reported to the Nottinghamshire Police during 2005 increased by 14% to 1371.
- 32% of incidents reported to the Nottinghamshire Police during 2005 were classified as non-crime.
- Over 32% of reported racist crimes were detected.
- 144 people were prosecuted in court and 26 received custodial sentences.
- 76% of the charges prosecuted were for racially aggravated offences.
- 88% of the charges prosecuted were proven in court.
- Charges dropped because witnesses failed to attend or refused to give evidence increased by one to 17.

### Racist incidents Reported by Schools

- 353 incidents were reported by Nottinghamshire and Nottingham City Schools during 2005 which similar to the number of incidents reported during 2004.
- In primary schools the majority of incidents occur after children have fallen out with each other.
- Less than 5% of County schools reported a racist incident during 2005.
- In primary schools the majority of victims are Black Caribbean and Mixed White and Black Caribbean children. In comprehensive schools the majority of victims are Asian (Pakistani and Indian).
- Where incidents are recorded, the reports received suggest that the incidents are being treated seriously.

## Areas of Concern

We were delighted when schools in the City and County joined the project and in the last five years we have received over a thousand reports of racist incidents in schools. However, when we look closely at where the reports came from during 2005 there is concern. In the City, just over 40% of schools reported one or more incidents. In the County, only 17 different schools reported incidents during the year which is less than 5% of the schools. We find it difficult to believe that, in the City more than half of the schools are racist free and in the County, more incredibly, 95% are racist free.

It is possible that the LEAs are **not** passing all information on to the Common Monitoring Project. It is also possible that incidents are being recorded by the schools but **not** forwarded to the LEA. If this is the case we would ask the schools be open and honest and follow the recommendation of the Stephen Lawrence Inquiry Report so that a true picture can be obtained. Until this happens there is that constant concern that schools are condoning racism, letting down the children in their care and failing to meet their legal duties under the Race Relations Amendment Act.

We read and hear in the media how health workers suffer regular verbal abuse and physical assaults. We would suspect a lot of this is racially motivated but we cannot be certain as no one will tell us. We have tried in the past, carried out presentations, but still the PCTs and hospitals will not share data. Once the current re-organisation in the health service is completed we will remind them of the legal obligations.

Not all departments within local authorities are reporting incidents and again we remind them of their legal obligations.

## Legal Duties

The Race Relations Amendment Act 2000 placed place a general duty on specified public bodies to promote race equality. It further specifies preparation of a race equality scheme and monitoring performance which includes reporting and recording of racist incidents.

There is a statutory requirement on publicly funded bodies but yet we are not confident that these requirements are being fully met by the agencies concerned. We would hope that senior management in the local authorities, the health service and education review their compliance with the Act and, furthermore, share data with the Common Monitoring Project to develop a more accurate picture about racism, its effects and the action to prevent it.

## Reporting Centres

When the Common Monitoring Project was set up in 1996 we were entering new territory. It had not been attempted before, to get agencies in the County to participate in an information sharing initiative. They were receptive to the idea and joined the project and in doing so, agreed to become a '*Reporting Centre*', a place where a victim could go and report an incident and receive support and advice on the options available.

Some years later the Stephen Lawrence Enquiry Report recommended that victims should have the ability to report at locations other than Police stations, something which Nottinghamshire already had.

We understand the thinking behind this recommendation as there are people who, for various reasons, do not want contact with the Police. Further, it is quite likely that these people are in vulnerable groups, where the likelihood of suffering racism is greater. However, good intentions do not always work in practice. Our experience from the last ten years gives a clear indication that people do not walk in off the street to a '*Reporting Centre*' to report a racist incident. Maybe we have all been at fault in not widely promoting the project but we are not sure this would have helped. When, some years ago, the County Library Services gained a lot of media coverage in the local papers and on local radio that all libraries were '*Racist Incident Reporting Centres*', it did not result in a single incident being reported.

So, are '*Reporting Centres*' a waste of time? No, they can serve a useful purpose but there is need for change. There are a wide range of agencies participating in the project and the people who use them may tell the staff many things about what is happening to them or in the area that they live. It may be considered by staff that some of the events that have happened are racially motivated. We believe the victim should be encouraged to report the incident even when this is not the reason for their visit to the agency.

Current training being offered by the Common Monitoring Project is stressing this point when looking at the responsibilities of '*Reporting Centres*'.

## Introduction

The Common Monitoring Project is a multi-agency initiative designed to improve the response to racist attacks and harassment in Nottinghamshire.

It is intended to: -

- \* provide a comprehensive picture of racist incidents in Nottinghamshire.
- \* enable the statutory and voluntary agencies to improve their response by providing reliable information on the level and pattern of attacks.
- \* give the minority ethnic communities confidence that racist attacks and harassment are being tackled effectively.

The effect of racist attacks and harassment is wider than the effect on the direct victims. Racism, and the possibility of being attacked, threatens the quality of life of whole communities. It is beholden on the relevant agencies to provide support to the victims and deal with the offenders in a way which makes it clear that racist behaviour is unacceptable and will not be condoned.

The Project, now in its eleventh year, is an initiative to collect and analyse data on racist incidents in the county. It is jointly funded by Nottingham City Council and Nottinghamshire County Council. It is demonstrating that, by agencies and communities working together, the threat of racist attacks and harassment can be challenged and all the communities in Nottinghamshire live in harmony.

This annual report provides a brief overview of County/City statistics followed by a more in depth look at each local authority area and concludes with an analysis of court proceedings and incidents in schools.

## Data/Information Presented

Information for this report was collected from the participating agencies during 2005 and the first six weeks of 2006. Since that time other information may have become available but cannot be included in this report.

Information presented concerning Police detection rates for 2005 reflect the situation at the end of January 2006. Since that time further crimes may have been detected resulting in improvements in the detection rates shown in this report.

The Crown Prosecution Service provides information to the project about the outcome of court proceedings. This information has been presented for each local authority area and in summary for the county. The average time between the crime being committed and court finalisation is about six months, but this can vary greatly depending on the type of court and other factors. In analysing data from the courts the court finalisation date has been used. This has resulted in the court data for 2004 including crimes committed between June 2001 to November 2004 and the data for 2005 includes crimes committed from July 2003 to November 2005.

## Racist Incidents Reported per Year

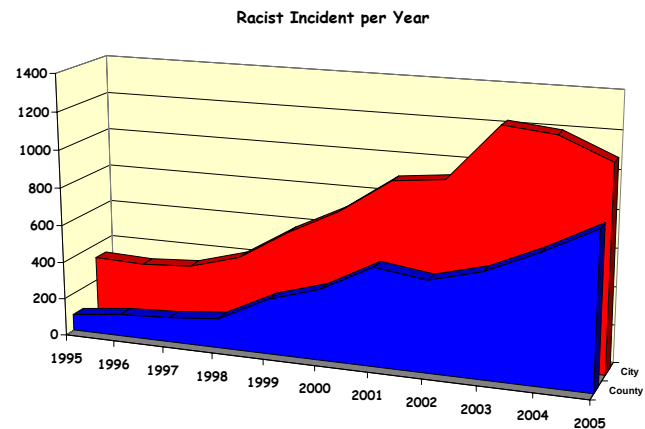
Year	Jan	Feb	Mar	Apr	May	Jun	Jul	Aug	Sep	Oct	Nov	Dec	Total
2004	163	128	187	160	181	179	151	119	147	148	148	165	1876
2005	148	171	175	199	162	138	226	158	133	146	152	108	1916

**Total racist incidents reported in 2005 - 1916.** This is an increase of 2% on the number of racist incidents reported during 2004. It includes 1326 incidents of verbal racist abuse, 254 physical assaults, 242 instances of criminal damage, and other allegations such as racial harassment, threats, malicious phone calls, written material, unpleasant substances, graffiti etc.

The chart to the right shows the number of racist incidents reported in the City and County during each year since 1995. In 2005, there has been an 18% increase in reported incidents in the county. This increase is due to more reports from Nottinghamshire Police and local authorities. In the City, reported incidents have fallen by 10%.

1389 racist incidents were reported to the Police during 2005, which is a 14% increase on the number reported to them during 2004.

The terrorist incidents in July caused an increase in reported incident that month.



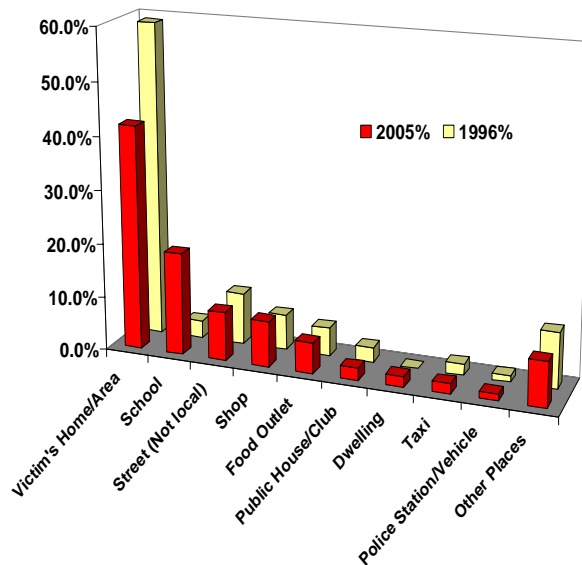
## Racist Incident Local Authority

2001 Census data has been used to calculate incidents per 1000 of the minority ethnic population.

Local Authority	Number of Reported Racist Incidents 2005	Percentage of Total Racist Incidents	Incidents per 1000 of Minority ethnic Population
Ashfield	83	4.3%	39
Bassetlaw	115	6.0%	39
Broxtowe	157	8.2%	21
Gedling	151	7.9%	22
Mansfield	124	6.5%	41
Newark & Sherwood	68	3.5%	20
Rushcliffe	129	6.8%	18
Nottinghamshire	827	43.2%	34
Nottingham City	1089	56.8%	21

## Place of Incidents

Place Racist Incidents Occurred



The chart to the left shows the principle places that racist incidents occurred during 2005 and draws comparison with 1996, the first year the project collected data.

The majority of incidents still occur at or near the victim's home but the proportion has fallen.

The proportion of incidents occurring in schools is now approaching about 20%. In 1996, schools were not participating in the project and the only information being received was when there was Police involvement in incidents.

Shops and food outlets continue to be places where incidents occur with 12% in 1996 increasing to over 14% in 2005.

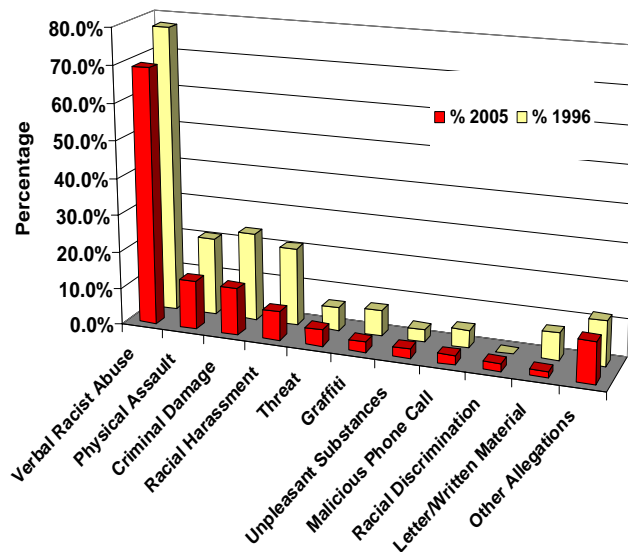
## Allegations

The chart to the right displays allegations made during incidents reported in 2005 and makes comparison to allegations made in 1996.

Verbal racist abuse remains the most common allegation and was alleged in nearly 70% of incidents in 2005.

The chance of an incident involving an allegation of physical assault, criminal damage and racial harassment has reduced since 1996.

Allegations Made



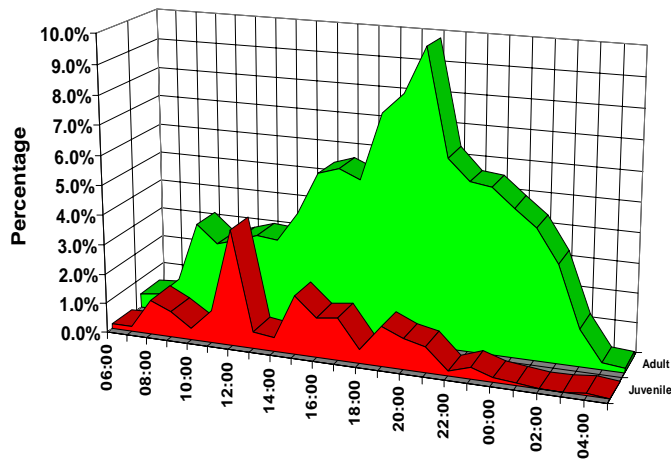
## Time of Incidents

During 2005, the time of day an incident occurred was recorded for 74% of the incidents and the chart to the left displays this data for juvenile and adult victims.

For juvenile victims, there is a main peak between 12 and 1pm. Over 90% of these incidents occur in schools. There are two further peaks around 3 to 4pm and early evening.

Adults account for 70% of the victims. There is a steady increase in incidents as the day progresses up to between 8pm and 9pm. 75% of incidents, where alcohol is a factor, occur between 9pm and 3am.

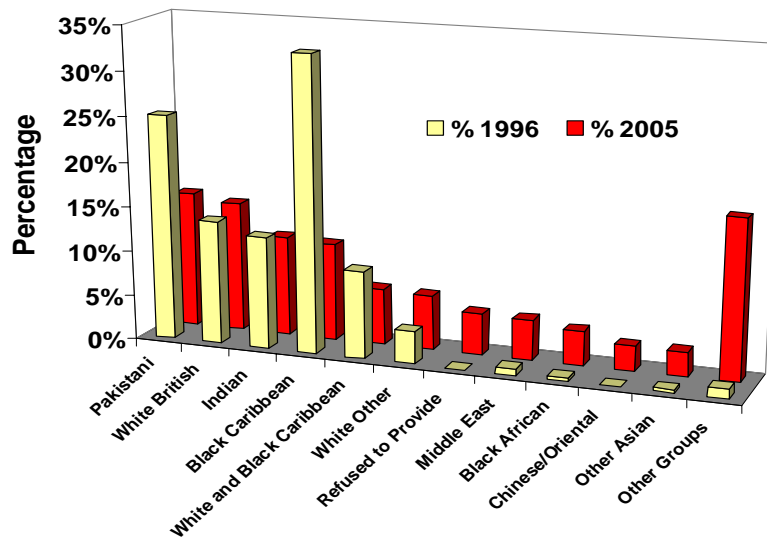
Time of Racist Incident (Victims)



## The Victims of Racism

1702 different people were the direct victims of racist incidents during 2005. Of these, 1400 were new victims and 472 different people, 28% of the victims, suffered repeat victimisation during the year. The victims during 2005 came from 18 different ethnic groups. The chart below displays the ethnic origin of the different victims during 2005 where that group accounts for 2% or more of all victims. It makes comparison to the ethnic origin of victims recorded during 1996.

Ethnic Origin of the Different Victims



The chart for victims gives a clear indication that the ethnic groups have changed during the last 10 years. In 1996, nearly 60% of victims were Black Caribbean or Pakistani. In 2005 these groups account for only 26% of victims. We are now seeing more victims from other ethnic groups. This is most likely a reflection of how the ethnic minority population has changed over the ten year period.

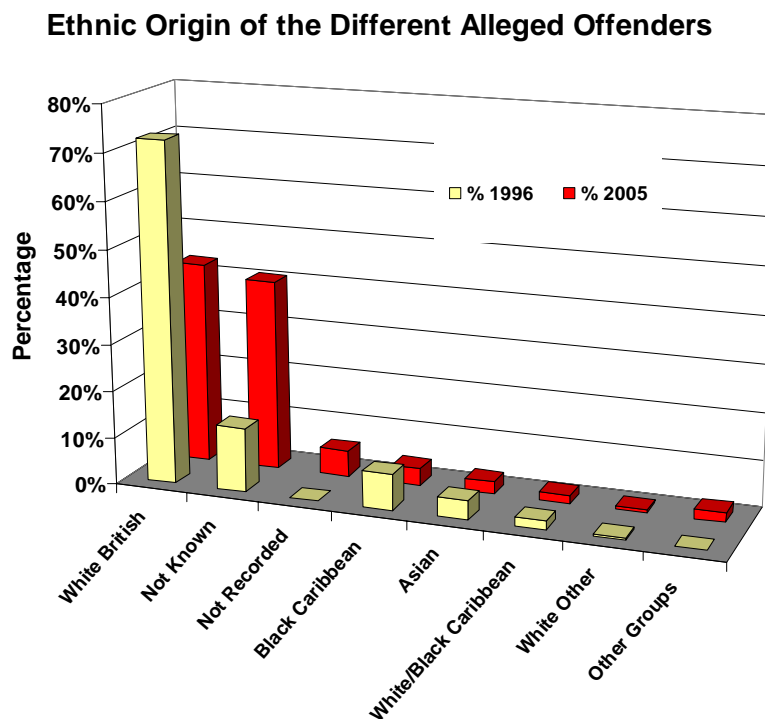
The split between male and female victims has widened over the last ten years. 55% of victim are male in 1996. This has now increased to 63% in 2005.

In 2005, 72% of the victims are adults and of these 29% were engaged in their normal work at the time of the incident. In 1996, 57% of victims were adults of which 21% were engaged in their normal work.

## The Alleged Offenders

Information regarding alleged offenders is not as complete as for victims and in many cases reliance is placed upon the victim's perception of age, gender and ethnic origin. Reports received during 2005 suggest that there were at least 2414 different alleged offenders.

During 2005, alleged offenders came from 18 different ethnic groups. The chart below shows the ethnic origin of the different alleged offenders where they account for more than 1% of all alleged offenders and makes comparison with the alleged offenders reported during 1996.



The proportion of alleged offenders identified as 'White British' has fallen by 29 percentage points during the 10 year period but remains the largest group. The "Not known" category has increased by 27 percentage points and reflects the quality of the information being forwarded to the project. The proportion of alleged Black Caribbean offenders has also fallen.

217 (9%) of alleged offenders are known to have repeat offended during the year.

With regard to gender, 57% of all alleged offenders are known to be male and 12% female. 1027 (43%) of all alleged offenders are known to be juveniles which is similar to 2004 but a 17% increase on the proportion in 1996. Most of this increase is as a result of racist incident reports now being received direct from schools in the City and County.

## Ashfield

There has been a 12% increase in reported racist incidents in Ashfield during 2005 when compared to racist incidents reported during 2004.

Incidents were reported in all months. There is no noticeable increase in racist incidents and crimes following the terrorist atrocities in London during July.

### Incidents per Month

Month	2004	2005
January	9	3
February	1	7
March	9	12
April	8	13
May	3	2
June	10	5
July	5	8
August	2	3
September	6	8
October	4	9
November	4	4
December	11	9
<b>Total:</b>	<b>72</b>	<b>83</b>

### Source of Incident Reports

	2004	2005
Other Police Information	7	3
Nottinghamshire Police	59	71
County Schools	4	3
County Social Services	0	2
Voluntary Groups	0	1
Nottinghamshire Library Services	0	1
Ashfield Homes	2	5

Incidents reports have been received from County Schools, Social Services, Ashfield Homes, Library Services and the Police.

The number of incidents reported to the Police has increased.

### Electoral Wards Incidents Reported

When compared to 2004, there has been a reduction in incidents reported in Hucknall and to a lesser extent in Kirkby-in-Ashfield.

Reported incidents in Sutton-in-Ashfield have more than doubled during 2005.

Selston, which for the previous three years only had a single incident per year, had seven reported during 2005.

	2004	2005	% 2005
Hucknall Central	8	7	8.43%
Hucknall East	12	5	6.02%
Hucknall North	3	2	2.41%
Hucknall West	8	4	4.82%
Jacksdale	0	0	0.00%
Kirkby-in-Ashfield Central	0	0	0.00%
Kirkby-in-Ashfield East	16	11	13.25%
Kirkby-in-Ashfield West	5	5	6.02%
Selston	1	7	8.43%
Sutton-in-Ashfield Central	2	12	14.46%
Sutton-in-Ashfield East	6	16	19.28%
Sutton-in-Ashfield North	6	8	9.64%
Sutton-in-Ashfield West	5	5	6.02%
Underwood	0	0	0.00%
Woodhouse	0	1	1.20%

## Ashfield

During 2005 shops and restaurant/fast food outlets have become the main target of racist incidents and account for 43% of the reported incidents.

There has been a reduction of incidents reported at or near the home of the victim.

### Incident Place

	2004	2005	% 2005
Shop	14	19	22.89%
Victim's Home	18	16	19.28%
Restaurant/Take Away	9	16	19.28%
Victim's Locality	13	9	10.84%
Street (Not Local)	2	7	8.43%
School	4	3	3.61%
Dwelling	0	3	3.61%
Road Traffic Incident	1	2	2.41%
Residential Care Home	1	2	2.41%
Place of Worship	1	2	2.41%
Taxi	1	1	1.20%
Public House/Club	2	1	1.20%
Library	0	1	1.20%
Commercial Premises	2	1	1.20%

### Allegations

	2004	2005	% 2005
Verbal Racist Abuse	47	58	69.88%
Criminal Damage	8	14	16.87%
Physical Assault	9	10	12.05%
Racial Harassment	6	9	10.84%
Unpleasant Substances	0	4	4.82%
Threat	8	4	4.82%
Religiously Aggravated Harassment	0	2	2.41%
Graffiti	0	2	2.41%
Failure to Pay Correct Fare	0	1	1.20%
Indecent Assault	0	1	1.20%
Letter/Written Material	5	1	1.20%
Burglary	0	1	1.20%
Racial Discrimination	2	1	1.20%
Verbal Religious Abuse	0	1	1.20%
Racist Behaviour	2	1	1.20%
Malicious Phone Call	5	1	1.20%

Verbal racist abuse continues to be the primary allegation and was alleged in over 70% of incidents during 2005.

Incidents of criminal damage have increased. They occurred at thirteen different locations.

Nearly 64% of alleged offenders in 2005 are known to be White: British and there are no details for 35% of the alleged offenders.

Four people are known to have repeat offended during 2005 compared to eight during 2004.

### Offender Origin

	2004	2005	% 2005
White: British	72	72	63.16%
Not Known	11	35	30.70%
Not Recorded	3	6	5.26%
Black: Caribbean	1	1	0.88%

## Ashfield

The number of alleged offenders known to be female has fallen and there have been increases in the number of male and 'gender not known' alleged offenders.

Nearly 35% of alleged offenders are known to be juveniles.

### Offender

Gender	Age	2004	2005	% 2005
Female	0 to 17 years	10	4	3.51%
Female	36 to 53 years	1	2	1.75%
Female	Adult	4	4	3.51%
Male	0 to 17 years	21	35	30.70%
Male	18 to 35 years	13	7	6.14%
Male	Adult	19	21	18.42%
Not known	0 to 17 years	0	4	3.51%
Not known	Adult	16	37	32.46%

### Victim Origin

	2004	2005	% 2005
Asian: Indian	11	13	19.12%
White: British	8	12	17.65%
Mixed: White and Black Caribbean	2	5	7.35%
Other Group: Chinese/Oriental	3	5	7.35%
Asian: Pakistani	3	4	5.88%
Black: Caribbean	9	4	5.88%
Other Group: Middle East	7	4	5.88%
Not Recorded	3	4	5.88%
Mixed: White and Asian	2	3	4.41%
White: Other White	1	2	2.94%
Black: African	1	2	2.94%
Refused to Provide	0	2	2.94%
Asian: Other Asian	3	2	2.94%
Asian: Bangladeshi	2	1	1.47%
Corporate Body	0	1	1.47%
Black: Other Black	0	1	1.47%
Other Group: Other Ethnic Group	0	1	1.47%
White: Irish	0	1	1.47%
Mixed: Other Mixed	2	1	1.47%

The victims of racist incidents came from sixteen different ethnic groups.

39% of the victims suffered repeat victimisation during 2005. Half of the repeat victims worked in shops, restaurants or fast food outlets.

The ethnic group of four victims was not recorded and two refused to provide details.

The majority of victims are males in the age range 18 years to 53 years. There are also a significant number of female victims in the age range 18 years to 35 years.

16% of the victims are juveniles.

### Victim

Gender	Age	2004	2005	% 2005
Female	0 to 17 years	0	5	7.35%
Female	18 to 35 years	5	11	16.18%
Female	36 to 53 years	2	5	7.35%
Female	Adult	3	4	5.88%
Male	0 to 17 years	6	4	5.88%
Male	18 to 35 years	24	17	25.00%
Male	36 to 53 years	8	14	20.59%
Male	54 to 71 years	3	2	2.94%
Male	Adult	5	3	4.41%
Not known	0 to 17 years	0	2	2.94%
Not known	Adult	3	1	1.47%

## Ashfield

Nearly 34% of incidents reported to the Police were not classified as crimes.

For incidents classified as crimes, the detection rate in 2005 is 17%. This is lower than the 35% achieved in 2004.

### Police Response

	2004	2005	% 2005
Not Detected	24	39	54.93%
Hate Incident Not A Crime	22	24	33.80%
Charged/Summons	11	7	9.86%
Caution/Reprimand/Final Warning	2	1	1.41%
Penalty Notice for Crime	0	0	0.00%
Detected No Further Police	0	0	0.00%
<b>Total</b>	<b>59</b>	<b>71</b>	

### Charges Prosecuted

Charge	2004	2005
Homicide		
Other Assault		1
Other Damage		
Other Harassment		
Other		1
Other Public Order		
RA Public Order	5	3
RA Assault		1
RA Damage		
RA Harassment		
Theft Act	2	

66% of charges finalised by the courts in 2005 were for racially aggravated offences compared to 71% of cases in 2004.

Half the charges finalised by the courts in 2005 were not proven. In 2004 all cases were proven.

Two charges were not prosecuted in 2005 due to witnesses failing to attend or refusing to give evidence.

### Outcome of Cases

Outcome	2004	2005
Bind Over		
Community Sentence		3
Custodial Sentence		1
Deferred Sentence		
Discharge		
Fine		
Other		3
Bound over without trial		
Not Guilty		3

### Reason for Not Prosecuting

Reason	2004	2005
Witness fails to attend	3	1
Witness refuses to give evidence		1
Other insufficient evidence		1
Public Interest	2	4
Written Off/Other		

With regard to public interest, three charges were diverted from the courts and the juvenile defendants given final warnings.

## Bassetlaw

There has been a 25% increase in reported racist incidents in Bassetlaw during 2005 when compared to racist incidents reported during 2004.

There is a noticeable increase in reported incidents in July, August and September. This may be a reaction to the terrorist incidents in London.

There has been an increase in reported incidents from schools and the Police during 2005.

### Incidents per Month

Month	2004	2005
January	4	6
February	6	9
March	7	11
April	7	8
May	3	7
June	3	7
July	8	12
August	14	10
September	10	17
October	8	9
November	10	13
December	6	6
<b>Total:</b>	<b>86</b>	<b>115</b>

### Source of Incident Reports

	2004	2005
Housing Associations	0	1
Other Police Information	2	12
Nottinghamshire Police	82	92
County Schools	2	12

### Electoral Wards Incidents Reported

	2004	2005	% 2005
Beckingham	0	0	0.00%
Blyth	0	0	0.00%
Carlton (Bassetlaw)	3	2	1.74%
Clayworth	0	0	0.00%
East Markham	0	2	1.74%
East Retford East	4	5	4.35%
East Retford North	0	2	1.74%
East Retford South	0	3	2.61%
East Retford West	8	4	3.48%
Everton	0	0	0.00%
Harworth	3	8	6.96%
Langold	3	1	0.87%
Misterton	2	0	0.00%
Rampton	2	1	0.87%
Ranskill	0	0	0.00%
Sturton	1	0	0.00%
Sutton	2	0	0.00%
Tuxford and Trent	4	6	5.22%
Welbeck	1	4	3.48%
Worksop East	9	8	6.96%
Worksop North	4	3	2.61%
Worksop North East	2	5	4.35%
Worksop North West	7	14	12.17%
Worksop South	13	27	23.48%
Worksop South East	18	20	17.39%

Over 50% of the reported racist incidents have occurred in Worksop Wards, North West, South and South East.

## Bassetlaw

There has been an increase in incidents reported in shops, restaurants and fast food outlets. Fourteen of the incidents in shops occurred at two locations.

Incidents reported at or near the victim's home have fallen and there has been an increase in incidents reported at schools.

### Incident Place

	2004	2005	2005
Restaurant/Take Away	13	22	19.13%
Victim's Home	28	18	15.65%
Shop	9	18	15.65%
Victim's Locality	13	15	13.04%
School	1	14	12.17%
Street (Not Local)	4	11	9.57%
Commercial Premises	0	3	2.61%
College/University	0	2	1.74%
Police Station/Vehicle	1	2	1.74%
Hotel/Hostel	0	2	1.74%
Public Transport (Bus)	1	1	0.87%
Dwelling	1	1	0.87%
Hospital/Doctors	2	1	0.87%
Petrol Station/Garage	1	1	0.87%
Public Park	1	1	0.87%
Residential Care Home	1	1	0.87%
Taxi	1	1	0.87%
Public House/Club	5	1	0.87%

### Allegations

	2004	2005	2005
Verbal Racist Abuse	61	79	68.70%
Racial Harassment	13	16	13.91%
Criminal Damage	9	12	10.43%
Physical Assault	17	9	7.83%
Unpleasant Substances	2	9	7.83%
Threat	3	8	6.96%
Graffiti	2	5	4.35%
Racist Incident - No Crime	0	4	3.48%
Letter/Written Material	0	3	2.61%
Ridicule of Culture	0	2	1.74%
Malicious Allegation	0	2	1.74%
Racist Flag/Sign	1	2	1.74%
Malicious Phone Call	1	2	1.74%
Violent Disorder	0	1	0.87%
Homophobic Abuse	0	1	0.87%
Non Payment of Taxi Fare	0	1	0.87%
Verbal Religious Abuse	0	1	0.87%
Witness Intimidation	2	1	0.87%
Religious Discrimination	0	1	0.87%
Noise Nuisance	0	1	0.87%

Verbal racist abuse is the primary allegation.

The number of alleged physical assaults has nearly halved even though the total number of reported incidents has increased.

## Bassetlaw

Three of the incidents involving White: British victims were related to mixed ethnicity relationships and the alleged offenders were White: British.

There has been an increase in Pakistani victims. Fourteen of the twenty incidents involving Pakistani victims relate to two people.

36% of the victims suffered repeat victimisation during 2005.

### Victim Origin

	2004	2005	% 2005
White: British	10	13	14.77%
Asian: Pakistani	2	10	11.36%
Asian: Indian	8	9	10.23%
Other Group: Middle East	7	8	9.09%
Not Recorded	3	8	9.09%
Mixed: White and Black Caribbean	3	6	6.82%
White: Other White	6	6	6.82%
Black: Caribbean	7	6	6.82%
Black: African	2	5	5.68%
Other Group: Chinese/Oriental	3	4	4.55%
Asian: Other Asian	3	4	4.55%
No Specific Victim	2	3	3.41%
Mixed: White and Black African	1	2	2.27%
Mixed: White and Asian	3	2	2.27%
Mixed: Other Mixed	3	1	1.14%
Not Known	0	1	1.14%

### Victim

Gender	Age	2004	2005	% 2005
Female	0 to 17 years	6	7	7.95%
Female	18 to 35 years	2	6	6.82%
Female	36 to 53 years	7	4	4.55%
Female	54 to 71 years	4	3	3.41%
Female	Adult	2	2	2.27%
Male	0 to 17 years	4	8	9.09%
Male	18 to 35 years	22	21	23.86%
Male	36 to 53 years	9	16	18.18%
Male	54 to 71 years	0	3	3.41%
Male	Adult	8	14	15.91%
Not known	Adult	3	4	4.55%

The majority of victims (42%) are males in the age range 18 years to 53 years.

25% of victims are female, 70% male and the gender of 5% is not known.

17% of victims are known to be juveniles.

### Offender Origin

Over 72% of the alleged offenders are known to be White: British.

13% of the alleged offenders are known to have repeat offended during 2005.

	2004	2005	% 2005
White: British	80	107	72.30%
Not Known	18	35	23.65%
Not Recorded	6	3	2.03%
Black: Caribbean	0	2	1.35%
Asian: Asian	0	1	0.68%

## Bassetlaw

There has been an increase in alleged female offenders, primarily in the juvenile age group.

There are no details of age or gender for 39% of the alleged offenders.

### Offender

Gender	Age	2004	2005	% 2005
Female	0 to 17 years	7	13	8.78%
Female	18 to 35 years	5	8	5.41%
Female	36 to 53 years	1	1	0.68%
Female	Adult	4	7	4.73%
Male	0 to 17 years	27	26	17.57%
Male	18 to 35 years	15	8	5.41%
Male	36 to 53 years	6	5	3.38%
Male	54 to 71 years	1	1	0.68%
Male	Adult	19	22	14.86%
Not known	0 to 17 years	6	27	18.24%
Not known	Adult	16	30	20.27%

### Police Response

	2004	2005	% 2005
Not Detected	29	34	36.96%
Hate Incident Not A Crime	26	27	29.35%
Charged/Summons	20	26	28.26%
Detected No Further Police	4	3	3.26%
Caution/Reprimand/Final Warning	3	2	2.17%
Penalty Notice for Crime	1	0	0.00%
<b>Total</b>	<b>83</b>	<b>92</b>	

Detection rates for crimes are similar for 2004 and 2005 at 49% and 48%.

### Charges Prosecuted

Charge	2004	2005
Homicide		
Other Assault		
Other Damage	1	1
Other Harassment		
Other	1	
Other Public Order		3
RA Public Order	5	3
RA Assault	1	
RA Damage		
RA Harassment	2	2
Theft Act		

### Outcome of Cases

Outcome	2004	2005
Bind Over		
Community Sentence	5	4
Custodial Sentence	1	1
Deferred Sentence		
Discharge		2
Fine	3	2
Other		
Bound over without trial		
Not Guilty	1	

The percentage of racially aggravated charges fell during 2005 but all charges prosecuted were proven.

Witnesses failed to attend in 4 cases which is an increase on the previous year.

### Reason for Not Prosecuting

Reason	2004	2005
Witness fails to attend	2	4
Witness refuses to give evidence		
Other insufficient evidence		
Public Interest		
Written Off/Other		2

## Broxtowe

There has been a 25% increase in reported racist incidents in Broxtowe during 2005 when compared to racist incidents reported during 2004.

There is an increase in reported incidents in July and this could be related to terrorist incidents in London.

Incidents were reported by schools, Broxtowe Borough Council and the Police.

Incidents reported to the Police increased by 37%.

### Incidents per Month

Month	2004	2005
January	16	16
February	8	14
March	15	12
April	1	10
May	6	8
June	4	11
July	9	17
August	5	10
September	12	11
October	14	16
November	11	18
December	16	14
<b>Total:</b>	<b>117</b>	<b>157</b>

### Source of Incident Reports

	2004	2005
Local Authorities	0	2
Other Police Information	16	15
Nottinghamshire Police	88	139
County Schools	13	5
Voluntary Groups	1	0

### Electoral Wards Incidents Reported

Incidents were reported in all but two of the electoral wards during 2005.

No single ward accounts for more than 10% of all incidents.

	2004	2005	% 2005
Attenborough	1	0	0.00%
Awsorth	0	2	1.27%
Beeston Central	6	4	2.55%
Beeston North	9	10	6.37%
Beeston Rylands	7	8	5.10%
Beeston West	8	15	9.55%
Bramcote	15	13	8.28%
Brinsley	0	0	0.00%
Chilwell East	6	11	7.01%
Chilwell West	9	15	9.55%
Cossall and Kimberley	12	14	8.92%
Eastwood North and Greasley (Beauvale)	2	5	3.18%
Eastwood South	9	9	5.73%
Greasley (Giltbrook and Newthorpe)	0	7	4.46%
Nuthall East and Strelley	8	7	4.46%
Nuthall West and Greasley (Watnall)	1	2	1.27%
Stapleford North	1	7	4.46%
Stapleford South East	2	4	2.55%
Stapleford South West	12	10	6.37%
Toton and Chilwell Meadows	9	11	7.01%
Trowell	0	3	1.91%

## Broxtowe

Incidents at or near the victim's home have increased during 2005.

There have been more incidents at restaurants and fast food outlets but less at shops.

### Incident Place

	2004	2005	% 2005
Victim's Home	35	55	35.03%
Victim's Locality	22	24	15.29%
Street (Not Local)	6	15	9.55%
Restaurant/Take Away	9	14	8.92%
School	17	11	7.01%
Shop	13	8	5.10%
Dwelling	2	7	4.46%
Taxi	1	4	2.55%
Commercial Premises	1	4	2.55%
Public House/Club	1	3	1.91%
Hospital/Doctors	0	3	1.91%
Community Centre	0	2	1.27%
Place of Worship	0	2	1.27%
Police Station/Vehicle	1	2	1.27%
Petrol Station/Garage	1	1	0.64%
Car Park	2	1	0.64%
Public Transport (Bus)	0	1	0.64%

### Allegations

	2004	2005	% 2005
Verbal Racist Abuse	58	68	43.31%
Criminal Damage	20	28	17.83%
Physical Assault	19	23	14.65%
Racial Harassment	15	21	13.38%
Unpleasant Substances	4	15	9.55%
Graffiti	6	15	9.55%
Malicious Phone Call	2	10	6.37%
Threat	4	6	3.82%
Verbal Religious Abuse	0	4	2.55%
Racial Discrimination	3	3	1.91%
Racist Incident - No Crime	0	3	1.91%
Religiously Aggravated Harassment	1	2	1.27%
Malicious Allegation	0	2	1.27%
Letter/Written Material	4	2	1.27%
Theft	2	2	1.27%
Religiously Aggravated Assault	0	1	0.64%
Arson	1	1	0.64%
Possession of Offensive Weapon	0	1	0.64%
Religiously Offensive Text Message	0	1	0.64%
Religiously Offensive Written Material	0	1	0.64%
Robbery	1	1	0.64%
Attempted Assault	0	1	0.64%
Racist Text Message	5	1	0.64%

Racist verbal abuse is the primary allegation and in 2005 was alleged in 43% of incidents.

One in seven of the incidents during 2005 involved an allegation of assault.

Allegation of unpleasant substances and graffiti were higher during 2005.

## Broxtowe

Victims come from fourteen different ethnic groups.

There has been an increase in White: British victims. 33% of their alleged offenders are also White: British, 7% of their alleged offenders are known to be from minority ethnic groups and there are no details for about 60%.

### Victim Origin

	2004	2005	% 2005
White: British	20	32	21.92%
Asian: Indian	24	15	10.27%
Asian: Pakistani	20	15	10.27%
Other Group: Chinese/Oriental	10	15	10.27%
No Specific Victim	2	10	6.85%
Black: Caribbean	11	10	6.85%
White: Other White	7	9	6.16%
Asian: Other Asian	4	8	5.48%
Mixed: White and Black Caribbean	5	7	4.79%
Other Group: Middle East	2	7	4.79%
Not Recorded	2	4	2.74%
Refused to Provide	0	3	2.05%
Statutory Body	0	3	2.05%
Mixed: White and Asian	1	2	1.37%
Black: African	1	2	1.37%
Asian: Bangladeshi	1	1	0.68%
Black: Other Black	0	1	0.68%
White: Irish	1	1	0.68%
Not Known	0	1	0.68%

### Victim

Gender	Age	2004	2005	% 2005
Female	0 to 17 years	13	6	4.11%
Female	18 to 35 years	10	20	13.70%
Female	36 to 53 years	10	9	6.16%
Female	54 to 71 years	5	5	3.42%
Female	72 to 89 years	0	1	0.68%
Female	Adult	6	15	10.27%
Male	0 to 17 years	20	15	10.27%
Male	18 to 35 years	13	21	14.38%
Male	36 to 53 years	13	19	13.01%
Male	54 to 71 years	9	10	6.85%
Male	Adult	9	12	8.22%
Not known	Adult	2	13	8.90%

38% of victims are female, 53% male and the gender is not known for 9%.

15% of victims are juveniles.

25% of the victims suffered repeat victimisation during 2005.

### Offender Origin

49% of alleged offenders are known to be White: British. There are no details for 44% of the alleged offenders. This is an increase on the proportion for 2004.

8% of the alleged offenders repeat offended during 2005.

	2004	2005	% 2005
White: British	99	107	49.31%
Not Known	28	95	43.78%
Asian: Asian	1	6	2.76%
Not Recorded	10	3	1.38%
Black: Caribbean	2	2	0.92%
White: Other White	0	1	0.46%
Black: Other Black	0	1	0.46%
Asian: Pakistani	5	1	0.46%
Asian: Indian	2	1	0.46%

## Broxtowe

64% of alleged offenders are known to be male.

47% of alleged offenders are known to be juveniles and of those, the vast majority are males.

### Offender

Gender	Age	2004	2005	%
<b>2005</b>				
Female	0 to 17 years	9	5	2.30%
Female	Adult	5	4	1.84%
Male	0 to 17 years	46	89	41.01%
Male	18 to 35 years	11	15	6.91%
Male	36 to 53 years	3	3	1.38%
Male	Adult	38	34	15.67%
Not known	0 to 17 years	8	8	3.69%

### Police Response

	2004	2005	% 2005
Not Detected	37	69	49.64%
Hate Incident Not A Crime	28	50	35.97%
Charged/Summons	11	16	11.51%
Caution/Reprimand/Final Warning	6	3	2.16%
Detected No Further Police	7	1	0.72%
Penalty Notice for Crime	0	0	0.00%
<b>Total</b>	<b>89</b>	<b>139</b>	

The detection rate is lower during 2005.

More reported incidents were classified non-crime during 2005.

### Charges Prosecuted

Charge	2004	2005
Homicide		
Other Assault		
Other Damage	1	
Other Harassment		
Other		1
Other Public Order	2	
RA Public Order	6	1
RA Assault	2	1
RA Damage	2	
RA Harassment	3	
Theft Act		

### Outcome of Cases

Outcome	2004	2005
Bind Over		
Community Sentence	7	1
Custodial Sentence		1
Deferred Sentence		
Discharge		
Fine	2	
Other		1
Bound over without trial		
Not Guilty	7	

The number of charges finalise in court was lower during 2005 but all cases were proven.

One charge was dropped in the public interest where the defendant pleaded guilty to the more serious racially aggravated offence for the same assault.

### Reason for Not Prosecuting

Reason	2004	2005
Witness fails to attend		
Witness refuses to give evidence	2	
Other insufficient evidence	1	
Public Interest		1
Written Off/Other		

## Gedling

There has been a 19% increase in reported racist incidents in Gedling during 2005 when compared to racist incidents reported during 2004.

There is no significant increase in reports following the terrorist incidents in London during July.

### Incidents per Month

Month	2004	2005
January	12	22
February	13	9
March	10	14
April	10	17
May	9	12
June	10	6
July	8	10
August	9	15
September	11	13
October	13	11
November	9	9
December	8	13
<b>Total:</b>	<b>122</b>	<b>151</b>

### Source of Incident Reports

	2004	2005
Local Authorities	1	3
Other Police Information	4	1
Nottinghamshire Police	95	118
City Schools	1	2
County Schools	16	25
Voluntary Groups	10	0
Nottingham City Homes	0	4

Incidents have been reported by schools, Gedling Borough Council and the Police all of which have reported more than during 2004.

### Electoral Wards Incidents Reported

Incidents were reported in all electoral wards during 2005.

Three wards, Calverton, Carlton and Carlton Hill each recorded more than 10% of the total incidents.

	2004	2005	% 2005
Bestwood Village	0	1	0.66%
Bonington	4	13	8.61%
Burton Joyce and Stoke Bardolph	3	2	1.32%
Calverton	17	16	10.60%
Carlton (Gedling)	7	19	12.58%
Carlton Hill	16	19	12.58%
Daybrook	16	11	7.28%
Gedling	3	6	3.97%
Killisick	4	3	1.99%
Kingswell	2	2	1.32%
Mapperley Plains	4	5	3.31%
Netherfield and Colwick	5	12	7.95%
Newstead	5	5	3.31%
Phoenix	10	2	1.32%
Porchester	7	6	3.97%
Ravenshead	0	1	0.66%
St James	2	3	1.99%
St Marys	7	10	6.62%
Valley	9	7	4.64%
Woodborough	0	2	1.32%
Woodthorpe	1	6	3.97%

## Gedling

The majority of racist incidents, 40%, were reported to have occurred at or near the victim's home.

There is also an increase in incidents reported in schools and on streets that are not near where the victim lives.

### Incident Place

	2004	2005	% 2005
Victim's Home	41	44	29.14%
School	17	29	19.21%
Shop	22	20	13.25%
Street (Not Local)	4	17	11.26%
Victim's Locality	7	16	10.60%
Restaurant/Take Away	11	9	5.96%
Dwelling	4	2	1.32%
Police Station/Vehicle	3	2	1.32%
Public House/Club	1	2	1.32%
Public Transport (Bus)	1	2	1.32%
Taxi	2	2	1.32%
Car Park	3	1	0.66%
Public Park	2	1	0.66%
School Bus/Travelling	1	1	0.66%
Leisure Centre	0	1	0.66%
Commercial Premises	0	1	0.66%
Road Traffic Incident	2	1	0.66%

### Allegations

	2004	2005	% 2005
Verbal Racist Abuse	71	100	66.23%
Criminal Damage	15	25	16.56%
Physical Assault	13	17	11.26%
Racial Harassment	8	9	5.96%
Threat	9	9	5.96%
Letter/Written Material	4	7	4.64%
Refusal to Obey Member of Staff	0	3	1.99%
Threatening Behaviour	3	3	1.99%
Graffiti	1	3	1.99%
Malicious Allegation	0	2	1.32%
Racist Incident - No Crime	3	2	1.32%
Disruption of A Lesson	0	2	1.32%
Bullying	0	1	0.66%
Racial Discrimination	1	1	0.66%
Arson	0	1	0.66%
Rude and Unco-Operative Behaviour	0	1	0.66%
Theft	0	1	0.66%
Racist Behaviour	0	1	0.66%
Racist Text Message	2	1	0.66%
Malicious Phone Call	3	1	0.66%

The pattern of allegations is similar in both years.

Verbal racist abuse was the most common allegation and was alleged in 66% of incidents.

Allegations of criminal damage have also increased.

## Gedling

The victims during 2005 are fr

Details of fifteen victims were

23% of the victims suffered re

30% of victims are female, 54%

19% of the victims are known t

### Victim Origin

	2004	2005	% 2005
Asian: Indian	28	25	17.86%
Asian: Pakistani	20	19	13.57%
White: British	13	19	13.57%
Not Recorded	5	15	10.71%
Black: Caribbean	15	13	9.29%
No Specific Victim	3	12	8.57%
Mixed: White and Black Caribbean	5	10	7.14%
White: Other White	7	8	5.71%
Other Group: Chinese/Oriental	4	4	2.86%
Refused to Provide	1	3	2.14%
Black: African	0	3	2.14%
Other Group: Middle East	2	2	1.43%
White: Irish	1	2	1.43%
Mixed: White and Asian	1	1	0.71%
Mixed: Other Mixed	0	1	0.71%
Statutory Body	0	1	0.71%
Asian: Other Asian	2	1	0.71%
Not Known	0	1	0.71%

### Victim

Gender	Age	2004	2005	% 2005
Female	0 to 17 years	6	7	5.00%
Female	18 to 35 years	10	11	7.86%
Female	36 to 53 years	15	16	11.43%
Female	54 to 71 years	5	4	2.86%
Female	Adult	7	5	3.57%
Male	0 to 17 years	14	19	13.57%
Male	18 to 35 years	12	17	12.14%
Male	36 to 53 years	19	26	18.57%
Male	54 to 71 years	4	3	2.14%
Male	Adult	12	10	7.14%
Not known	0 to 17 years	3	1	0.71%
Not known	Adult	3	21	15.00%

rs.

om minority ethnic groups.

005.

### Offender Origin

	2004	2005	% 2005
Not Known	65	89	43.41%
White: British	79	75	36.59%
Black: Caribbean	4	17	8.29%
Not Recorded	2	10	4.88%
Other Group: Chinese/Oriental	0	5	2.44%
Mixed: White and Black Caribbean	1	4	1.95%
Black: Other Black	1	3	1.46%
White: Other White	2	1	0.49%
Asian: Indian	0	1	0.49%

## Gedling

9% of alleged offenders are female, 66% male and no details are known for 25%.

Nearly 54% of alleged offender are juveniles, predominately males.

### Offender

Gender	Age	2004	2005	% 2005
Female	0 to 17 years	20	9	4.39%
Female	18 to 35 years	2	3	1.46%
Female	Adult	3	7	3.41%
Male	0 to 17 years	58	96	46.83%
Male	18 to 35 years	13	5	2.44%
Male	36 to 53 years	3	4	1.95%
Male	72 to 89 years	0	1	0.49%
Male	Adult	34	30	14.63%
Not known	0 to 17 years	0	5	2.44%
Not known	Adult	42	45	21.95%

### Police Response

	2004	2005	% 2005
Hate Incident Not A Crime	50	56	47.46%
Not Detected	27	36	30.51%
Charged/Summons	12	21	17.80%
Caution/Reprimand/Final Warning	5	5	4.24%
Penalty Notice for Crime	0	0	0.00%
Detected No Further Police	1	0	0.00%
<b>Total</b>	<b>95</b>	<b>118</b>	

In both 2004 and 2005, the majority of incidents have been categorised as non-crime.

For both years the detection rate for incidents classified as crimes is about 40%.

### Charges Prosecuted

Charge	2004	2005
Homicide		
Other Assault		
Other Damage	1	1
Other Harassment		1
Other		1
Other Public Order		
RA Public Order	10	3
RA Assault	1	3
RA Damage		2
RA Harassment	3	1
Theft Act		

### Outcome of Cases

Outcome	2004	2005
Bind Over		
Community Sentence	4	3
Custodial Sentence	1	6
Deferred Sentence		
Discharge	1	1
Fine	1	1
Other	1	
Bound over without trial		
Not Guilty	7	1

Six people received custodial sentences for charges finalise during 2005 and only one case was not proven.

Regarding public interest, two charges were dropped when the defendant pleaded to non-racially aggravated offences.

### Reason for Not Prosecuting

Reason	2004	2005
Witness fails to attend		1
Witness refuses to give evidence		
Other insufficient evidence		
Public Interest		3
Written Off/Other	1	

## Mansfield

There has been a 17% increase in reported racist incidents in Mansfield during 2005 when compared to racist incidents reported during 2004.

There is an increase in reported incidents during July and August and this may be related to terrorist incidents in London.

### Incidents per Month

Month	2004	2005
January	8	7
February	11	8
March	4	8
April	8	15
May	14	17
June	7	9
July	12	13
August	4	15
September	3	7
October	11	6
November	7	15
December	14	4
<b>Total:</b>	<b>103</b>	<b>124</b>

### Source of Incident Reports

	2004	2005
Other Police Information	6	4
Nottinghamshire Police	90	117
County Schools	8	4
County Social Services	0	1

Incidents were reported by schools, Social Services and the Police.

The number of incidents reported by the Police increased.

### Electoral Wards Incidents Reported

	2004	2005	% 2005
Berry Hill	2	0	0.00%
Birklands	3	3	2.42%
Broomhill	8	5	4.03%
Cumberlands	0	1	0.81%
Eakring	5	3	2.42%
Forest Town East	2	12	9.68%
Forest Town West	3	1	0.81%
Grange Farm	0	0	0.00%
Ladybrook	7	4	3.23%
Leeming	2	0	0.00%
Lindhurst	6	16	12.90%
Meden	3	2	1.61%
Oak Tree	7	9	7.26%
Pleasley Hill	4	2	1.61%
Portland	11	17	13.71%
Priory	1	6	4.84%
Ravensdale	17	23	18.55%
Robin Hood	7	8	6.45%
Sherwood (Mansfield)	15	12	9.68%

Racist incidents were reported in all but three electoral wards during 2005.

There were increases in reported incidents in Forest Town East and Lindhurst.

Nearly 20% of all reported incident occurred in Ravensdale Ward.

## Mansfield

Nearly twice as many incidents occurred at the home of victims during 2005. Seven of the incidents appear to be related to disputes between neighbours.

Incidents at shops more than doubled during 2005. Twelve of the thirty one incidents occurred at two locations.

### Incident Place

	2004	2005	% 2005
Victim's Home	18	34	27.42%
Shop	14	31	25.00%
Street (Not Local)	11	15	12.10%
Restaurant/Take Away	15	11	8.87%
Victim's Locality	14	7	5.65%
School	9	6	4.84%
Taxi	1	5	4.03%
Public House/Club	3	3	2.42%
Football/Cricket Club	1	3	2.42%
Police Station/Vehicle	5	2	1.61%
Car Park	0	1	0.81%
Community Centre	0	1	0.81%
Dwelling	3	1	0.81%
Allotment	0	1	0.81%
Road Traffic Incident	0	1	0.81%
School Bus/Travelling	1	1	0.81%
Residential Care Home	0	1	0.81%

### Allegations

	2004	2005	% 2005
Verbal Racist Abuse	73	95	76.61%
Physical Assault	22	31	25.00%
Criminal Damage	13	15	12.10%
Racial Harassment	7	11	8.87%
Threat	6	6	4.84%
Theft	1	4	3.23%
Malicious Phone Call	4	4	3.23%
Graffiti	2	3	2.42%
Rude Gesture	0	1	0.81%
Racist Gesture	0	1	0.81%
Racist Chanting	0	1	0.81%
Racial Discrimination	1	1	0.81%
Letter/Written Material	2	1	0.81%
Attempted Burglary	0	1	0.81%

Verbal racist abuse was alleged in over 76% of incidents during 2005.

Reported physical assaults have increased and, during 2005, assault was alleged in one in every four incidents. This is over twice the average for the county.

Over 71% of alleged offenders are White: British with only 4% from the minority ethnic communities.

10% of the alleged offenders are known to have repeat offended during 2005.

### Offender Origin

	2004	2005	% 2005
White: British	82	113	71.52%
Not Known	19	36	22.78%
Not Recorded	7	3	1.90%
White: Other White	0	1	0.63%
Other Group: Middle East	0	1	0.63%
Black: Caribbean	1	1	0.63%
Asian: Pakistani	0	1	0.63%
Asian: Other Asian	0	1	0.63%
Asian: Asian	0	1	0.63%

## Mansfield

9% of alleged offenders are known to be female, 59% male and no details are known for about 35%.

37% of alleged offenders are juvenile with the majority being male.

### Offender

Gender	Age	2004	2005	% 2005
Female	0 to 17 years	2	8	5.06%
Female	18 to 35 years	2	1	0.63%
Female	36 to 53 years	1	2	1.27%
Female	Adult	5	3	1.90%
Male	0 to 17 years	23	45	28.48%
Male	18 to 35 years	23	19	12.03%
Male	36 to 53 years	3	4	2.53%
Male	54 to 71 years	1	1	0.63%
Male	Adult	25	24	15.19%
Not known	0 to 17 years	6	5	3.16%
Not known	Adult	19	46	29.11%

### Victim Origin

	2004	2005	% 2005
White: British	19	21	17.95%
Asian: Indian	17	16	13.68%
Asian: Bangladeshi	2	15	12.82%
White: Other White	9	9	7.69%
Black: Caribbean	7	9	7.69%
Asian: Pakistani	4	8	6.84%
Other Group: Middle East	4	6	5.13%
Refused to Provide	1	5	4.27%
Not Recorded	6	5	4.27%
Asian: Other Asian	1	4	3.42%
Black: African	4	4	3.42%
No Specific Victim	7	3	2.56%
Mixed: White and Black Caribbean	2	3	2.56%
Not Known	1	2	1.71%
White: Irish	1	2	1.71%
Mixed: Other Mixed	2	1	0.85%
Black: Other Black	2	1	0.85%
Other Group: Chinese/Oriental	3	1	0.85%
Other Group: Other Ethnic Group	1	1	0.85%
Mixed: White and Black African	1	1	0.85%

During 2005 the victims came from sixteen different ethnic groups.

There has been an increase in Bangladeshi victims.

Five victims refused to provide details of ethnicity.

38% of the victims suffered repeat victimisation during 2005.

32% of victims are female, 64% male and there are no gender details for 3%.

17% of victims are juveniles.

Nearly 40% of the victims are from the age range 18 years to 35 years.

### Victim

Gender	Age	2004	2005	% 2005
Female	0 to 17 years	7	8	6.84%
Female	18 to 35 years	12	18	15.38%
Female	36 to 53 years	5	5	4.27%
Female	54 to 71 years	0	2	1.71%
Female	Adult	6	4	3.42%
Male	0 to 17 years	9	12	10.26%
Male	18 to 35 years	22	28	23.93%
Male	36 to 53 years	11	19	16.24%
Male	54 to 71 years	4	5	4.27%
Male	Adult	9	12	10.26%
Not known	Adult	8	4	3.42%

## Mansfield

27% of incidents reported during 2005 were categorised non crime.

The detected rate has fallen from 42% to 33% in 2005.

### Police Response

	2004	2005	% 2005
Not Detected	42	57	48.72%
Hate Incident Not A Crime	18	32	27.35%
Charged/Summons	24	23	19.66%
Caution/Reprimand/Final Warning	2	4	3.42%
Penalty Notice for Crime	2	1	0.85%
Detected No Further Police	3	0	0.00%
<b>Total</b>	<b>91</b>	<b>117</b>	

### Charges Prosecuted

Charge	2004	2005
Homicide		
Other Assault		1
Other Damage	1	
Other Harassment		
Other		
Other Public Order	1	
RA Public Order	6	7
RA Assault	3	2
RA Damage		
RA Harassment	1	

The majority of cases prosecuted in 2005 were for racially aggravated offences.

In 2004 and 2005, two people received custodial sentences.

### Outcome of Cases

Outcome	2004	2005
Bind Over		
Community Sentence	2	2
Custodial Sentence	2	2
Deferred Sentence		
Discharge	3	1
Fine	2	2
Other		
Bound over without trial		
Not Guilty	3	3

### Reason for Not Prosecuting

Reason	2004	2005
Witness fails to attend	1	
Witness refuses to give evidence		
Other insufficient evidence	5	1
Public Interest		
Written Off/Other	1	

Only one charge was dropped in 2005 and this was for insufficient evidence.

## Newark and Sherwood

There has been a 22% decrease in reported racist incidents in Newark and Sherwood during 2005 when compared to racist incidents reported during 2004.

Incidents were reported by schools, Newark and Sherwood Homes, Newark and Sherwood District Council and the Police.

Incidents reported by schools have fallen.

### Incidents per Month

Month	2004	2005
January	7	7
February	3	5
March	4	6
April	7	7
May	11	7
June	8	7
July	8	9
August	5	4
September	11	3
October	6	5
November	8	4
December	8	3
<b>Total:</b>	<b>86</b>	<b>67</b>

### Source of Incident Reports

	2004	2005
Housing Associations	1	0
Local Authorities	5	1
Other Police Information	7	1
Nottinghamshire Police	59	57
City Schools	0	1
County Schools	17	5
Newark and Sherwood Homes	0	3

### Electoral Wards Incidents Reported

	2004	2005	% 2005
Balderton North	2	3	4.48%
Balderton West	4	2	2.99%
Beacon	2	0	0.00%
Bilsthorpe	6	2	2.99%
Blidworth	2	3	4.48%
Boughton	17	5	7.46%
Bridge (Newark)	3	4	5.97%
Castle	23	22	32.84%
Caunton	0	1	1.49%
Clipstone	1	1	1.49%
Collingham and Meering	2	0	0.00%
Devon	1	5	7.46%
Edwinstowe	2	0	0.00%
Farndon	1	1	1.49%
Farnsfield	1	0	0.00%
Lowdham	3	1	1.49%
Magnus	8	8	11.94%
Muskham	1	0	0.00%
Ollerton	3	2	2.99%
Rainworth	0	5	7.46%
Southwell East	1	1	1.49%
Southwell North	0	0	0.00%
Southwell West	0	1	1.49%
Sutton-on-Trent	1	0	0.00%
Trent (N & S)	0	0	0.00%
Winthorpe	2	0	0.00%

No racist incidents were reported in nine electoral wards.

Over 30% of all incidents were reported in Castle ward.

## Newark and Sherwood

Nearly 40% of incidents occurred at or near the victim's home and 30% occurred at shops and restaurant/fast food outlets.

Six of the ten incidents at shops occurred at two locations and half of the incidents at restaurant/fast food outlets occurred at one location.

### Incident Place

	2004	2005	% 2005
Victim's Home	18	19	28.36%
Shop	11	10	14.93%
Restaurant/Take Away	12	10	14.93%
Victim's Locality	8	7	10.45%
School	18	7	10.45%
Public House/Club	2	6	8.96%
Street (Not Local)	4	2	2.99%
Voluntary Organisation	0	1	1.49%
Statutory Agency	0	1	1.49%
Public Park	0	1	1.49%
Petrol Station/Garage	2	1	1.49%
Leisure Centre	1	1	1.49%
Dwelling	3	1	1.49%

### Allegations

	2004	2005	% 2005
Verbal Racist Abuse	61	55	82.09%
Racial Harassment	7	8	11.94%
Physical Assault	12	8	11.94%
Criminal Damage	6	5	7.46%
Threat	5	4	5.97%
Malicious Phone Call	3	2	2.99%
Graffiti	2	2	2.99%
Unpleasant Substances	1	1	1.49%
Threatening Behaviour	0	1	1.49%
Rude Gesture	0	1	1.49%
Racist Gesture	0	1	1.49%
Racist E-Mail	0	1	1.49%
Noise Nuisance	0	1	1.49%
Letter/Written Material	1	1	1.49%

Verbal racist abuse was alleged in over 82% of the incidents.

There is a fall in the number of alleged assaults. Other allegations are very similar to the previous year.

### Offender Origin

Nearly 67% of alleged offenders are White: British, 6% are from minority ethnic groups and no details are known for 27%.

	2004	2005	% 2005
White: British	82	56	66.67%
Not Known	19	19	22.62%
Not Recorded	2	4	4.76%
Traveller	4	3	3.57%
Black: Caribbean	1	2	2.38%

## Newark and Sherwood

20% of alleged offenders are female, 55% male and no gender details are known for 25%.

43% of alleged offenders are juveniles.

11% of alleged offenders are known to have repeat offended during 2005.

### Offender

Gender	Age	2004	2005	% 2005
Female	0 to 17 years	8	9	10.71%
Female	18 to 35 years	3	3	3.57%
Female	36 to 53 years	1	2	2.38%
Female	Adult	4	3	3.57%
Male	0 to 17 years	31	23	27.38%
Male	18 to 35 years	21	10	11.90%
Male	36 to 53 years	8	4	4.76%
Male	Adult	11	9	10.71%
Not known	0 to 17 years	7	4	4.76%
Not known	Adult	19	17	20.24%

### Victim Origin

	2004	2005	% 2005
White: Other White	16	9	15.52%
Not Recorded	2	6	10.34%
Black: Caribbean	9	6	10.34%
Mixed: White and Black Caribbean	8	6	10.34%
White: British	11	6	10.34%
Asian: Other Asian	3	4	6.90%
Traveller	3	3	5.17%
Asian: Bangladeshi	2	3	5.17%
Asian: Pakistani	2	3	5.17%
Asian: Indian	5	3	5.17%
Other Group: Middle East	1	2	3.45%
Other Group: Chinese/Oriental	2	2	3.45%
Refused to Provide	1	1	1.72%
Mixed: White and Black African	0	1	1.72%
Mixed: White and Asian	0	1	1.72%
White: Irish	1	1	1.72%
No Specific Victim	4	1	1.72%

The victims during 2005 came from fourteen different ethnic groups.

33% of the victims suffered repeat victimisation during 2005.

### Victim

39% of victims are female, 59% male and for 2% no gender details are known.

38% of victims are in the age range 18 years to 35 years.

22% of victims are known to be juveniles.

Gender	Age	2004	2005	% 2005
Female	0 to 17 years	12	5	8.62%
Female	18 to 35 years	6	11	18.97%
Female	36 to 53 years	8	3	5.17%
Female	54 to 71 years	0	1	1.72%
Female	Adult	3	3	5.17%
Male	0 to 17 years	8	8	13.79%
Male	18 to 35 years	15	11	18.97%
Male	36 to 53 years	8	8	13.79%
Male	54 to 71 years	2	2	3.45%
Male	72 to 89 years	1	1	1.72%
Male	Adult	8	4	6.90%
Not known	Adult	4	1	1.72%

## Newark and Sherwood

### Police Response

	2004	2005	% 2005
Not Detected	22	23	40.35%
Hate Incident Not A Crime	20	18	31.58%
Charged/Summons	12	15	26.32%
Detected No Further Police	3	1	1.75%
Penalty Notice for Crime	0	0	0.00%
Caution/Reprimand/Final Warning	2	0	0.00%
<b>Total</b>	<b>59</b>	<b>57</b>	

Detection rates are similar for the two years at just over 40%

### Charges Prosecuted

Charge	2004	2005
Homicide		
Other Assault		1
Other Damage		
Other Harassment		
Other		
Other Public Order		2
RA Public Order	2	8
RA Assault		
RA Damage		
RA Harassment	2	
Theft Act		

The majority of cases prosecuted in 2005 were for racially aggravated public order.

Four of the charges finalised during 2005 were not proven.

One person received a custodial sentence.

### Outcome of Cases

Outcome	2004	2005
Bind Over		
Community Sentence	2	2
Custodial Sentence		1
Deferred Sentence		
Discharge		2
Fine	2	1
Other		1
Bound over without trial		
Not Guilty		4

Five charges were dropped during 2005.

With regard to public interest, one charge was dropped because the victim had moved away and did not want to appear in court. In the other charges the defendant was bound over without trial.

### Reason for Not Prosecuting

Reason	2004	2005
Witness fails to attend		
Witness refuses to give evidence		
Other insufficient evidence		1
Public Interest		3
Written Off/Other		1

## Rushcliffe

There has been a 27% increase in reported racist incidents in Rushcliffe during 2005 when compared to racist incidents reported during 2004.

### Incidents per Month

Month	2004	2005
January	11	12
February	6	14
March	8	10
April	8	12
May	4	8
June	14	17
July	5	17
August	2	11
September	6	6
October	10	10
November	9	8
December	11	4
<b>Total:</b>	<b>94</b>	<b>129</b>

### Source of Incident Reports

	2004	2005
Local Authorities	2	2
Other Police Information	6	7
Nottinghamshire Police	66	106
City Schools	2	1
County Schools	12	11
County Social Services	3	5
Voluntary Groups	5	1
Rushcliffe Homes	0	2

### Electoral Wards Incidents Reported

	2004	2005	% 2005
Abbey	3	2	1.55%
Bingham East	2	0	0.00%
Bingham West	0	2	1.55%
Compton Acres	5	2	1.55%
Cotgrave	16	17	13.18%
Cranmer	1	1	0.78%
Edwalton Village	10	12	9.30%
Gamston	12	32	24.81%
Gotham	0	0	0.00%
Keyworth North	0	0	0.00%
Keyworth South	1	2	1.55%
Lady Bay	1	0	0.00%
Leake	1	4	3.10%
Lutterell	5	13	10.08%
Manvers	1	1	0.78%
Melton	5	6	4.65%
Musters	4	4	3.10%
Nevile	0	0	0.00%
Oak	0	0	0.00%
Ruddington	3	2	1.55%
Soar Valley	0	1	0.78%
Stanford	0	1	0.78%
Thoroton	0	0	0.00%
Tollerton	0	0	0.00%
Trent (Rushcliffe)	7	7	5.43%
Trent Bridge	17	19	14.73%
Wiverton	0	0	0.00%
Wolds	0	1	0.78%

Incidents were reported by schools, Social Services, Rushcliffe Homes, Rushcliffe Borough Council, the Police and Nottingham and Nottinghamshire Racial Equality Council.

There was an increase in reported incidents from the Police.

No racist incidents were reported in nine electoral wards during 2005.

Nearly 25% of reported incident were in Gamston Ward and over 10% of incidents were in Cotgrave, Lutterell and Trent Bridge Wards

## Rushcliffe

Over half of all racist incidents in 2005 have occurred at the home of the victim. Of the sixty six reported, eighteen concern one victim.

There has also been an increase in incidents on streets not near the home of the victim.

### Incident Place

	2004	2005	% 2005
Victim's Home	32	66	51.16%
Victim's Locality	16	17	13.18%
Street (Not Local)	4	13	10.08%
School	14	13	10.08%
Restaurant/Take Away	7	5	3.88%
Public House/Club	2	4	3.10%
Taxi	2	2	1.55%
Community Centre	1	2	1.55%
Shop	2	1	0.78%
Road Traffic Incident	0	1	0.78%
Police Station/Vehicle	1	1	0.78%
Hospital/Doctors	0	1	0.78%
Commercial Premises	0	1	0.78%
Car Park	0	1	0.78%
Building Site	0	1	0.78%

### Allegations

	2004	2005	% 2005
Verbal Racist Abuse	51	79	61.24%
Physical Assault	14	21	16.28%
Racial Harassment	6	14	10.85%
Criminal Damage	14	12	9.30%
Letter/Written Material	7	7	5.43%
Malicious Phone Call	3	7	5.43%
Unpleasant Substances	1	6	4.65%
Threat	6	6	4.65%
Religious Discrimination	0	3	2.33%
Graffiti	3	3	2.33%
Racist Incident - No Crime	1	3	2.33%
Verbal Religious Abuse	0	3	2.33%
Racist E-Mail	1	2	1.55%
Racial Discrimination	2	2	1.55%
Religiously Aggravated Harassment	1	2	1.55%
Blackmail	0	1	0.78%
Religiously Aggravated Assault	1	1	0.78%
Religiously Offensive Written Material	0	1	0.78%
Ridicule of Culture	0	1	0.78%
Robbery	1	1	0.78%
Racist Gesture	0	1	0.78%

Verbal racist abuse was the most common allegation and was alleged in 61% of incidents.

There has been a small increase in the number of physical assaults and incidents of harassment.

## Rushcliffe

The victims during 2005 came from fourteen different ethnic groups.

33% of the victims suffered repeat victimisation during 2005.

No ethnic origin information was recorded for eleven victims and three refused to provide the information.

## Victim Origin

	2004	2005	% 2005
Asian: Indian	14	21	18.58%
White: British	16	18	15.93%
Asian: Pakistani	19	17	15.04%
Not Recorded	3	11	9.73%
Mixed: White and Black Caribbean	5	7	6.19%
Asian: Other Asian	3	6	5.31%
Black: Caribbean	6	6	5.31%
Other Group: Middle East	2	4	3.54%
Mixed: Other Mixed	1	4	3.54%
No Specific Victim	3	3	2.65%
White: Other White	7	3	2.65%
Other Group: Chinese/Oriental	2	3	2.65%
Refused to Provide	0	3	2.65%
Mixed: White and Asian	5	3	2.65%
Black: Other Black	1	2	1.77%
Black: African	2	1	0.88%
Traveller	1	1	0.88%

## Victim

Gender	Age	2004	2005	% 2005
Female	0 to 17 years	7	10	8.85%
Female	18 to 35 years	6	10	8.85%
Female	36 to 53 years	6	14	12.39%
Female	54 to 71 years	5	2	1.77%
Female	Adult	7	9	7.96%
Male	0 to 17 years	19	19	16.81%
Male	18 to 35 years	15	20	17.70%
Male	36 to 53 years	13	11	9.73%
Male	54 to 71 years	2	1	0.88%
Male	Adult	7	13	11.50%
Not known	0 to 17 years	1	1	0.88%
Not known	Adult	3	3	2.65%

29% of the victims in 2005 are female, 57% male and for 4% there is no gender information.

26% of victims in 2005 are juveniles.

## Offender

Gender	Age	2004	2005	% 2005
Female	0 to 17 years	7	7	4.52%
Female	18 to 35 years	3	1	0.65%
Female	36 to 53 years	1	3	1.94%
Female	54 to 71 years	0	1	0.65%
Female	Adult	8	13	8.39%
Male	0 to 17 years	29	39	25.16%
Male	18 to 35 years	7	12	7.74%
Male	36 to 53 years	5	3	1.94%
Male	54 to 71 years	0	2	1.29%
Male	Adult	32	28	18.06%
Not known	0 to 17 years	0	4	2.58%
Not known	Adult	18	42	27.10%

16% of alleged offenders are female, 54% male and for 30% no gender information is available.

32% of the alleged offenders are juveniles, primarily males.

## Rushcliffe

Nearly 53% of alleged offenders are White: British, 3% are from minority ethnic groups and for 44%, there is no information.

### Offender Origin

	2004	2005	% 2005
White: British	74	82	52.90%
Not Known	22	54	34.84%
Not Recorded	5	14	9.03%
Asian: Pakistani	2	3	1.94%
Traveller	1	1	0.65%
Black: Caribbean	3	1	0.65%

### Police Response

	2004	2005	% 2005
Hate Incident Not A Crime	28	50	47.17%
Not Detected	29	31	29.25%
Charged/Summons	8	22	20.75%
Detected No Further Police	1	2	1.89%
Penalty Notice for Crime	0	1	0.94%
Caution/Reprimand/Final Warning	0	0	0.00%
<b>Total</b>	<b>66</b>	<b>106</b>	

Over 47% of incidents reported during 2005 were categorised as non-crime.

The detection rate has increased from 24% to 45% in 2005.

### Charges Prosecuted

Charge	2004	2005
Homicide		
Other Assault		
Other Damage		
Other Harassment		
Other	1	
Other Public Order		3
RA Public Order	2	5
RA Assault		9
RA Damage		
RA Harassment		
Theft Act		

### Outcome of Cases

Outcome	2004	2005
Bind Over		
Community Sentence		10
Custodial Sentence		
Deferred Sentence		
Discharge		1
Fine	3	
Other		6
Bound over without trial		
Not Guilty		

Fourteen racially aggravated charges were prosecuted during 2005 and all were proven.

One charge was dropped for public interest where the defendant pleaded to a more serious charge.

### Reason for Not Prosecuting

Reason	2004	2005
Witness fails to attend	1	
Witness refuses to give evidence		
Other insufficient evidence		
Public Interest		1
Written Off/Other		

## Nottingham

There has been an 11% decrease in reported racist incidents in Nottingham during 2005 when compared to racist incidents reported during 2004.

There is a clear increase in reported incidents in July which is believed related to the terrorist incidents in London.

### Source of Incident Reports

	2004	2005
Emergency Services (excluding Police)	1	0
Housing Associations	81	0
Commercial Organisations	1	0
Local Authorities	69	3
Other Police Information	53	38
Parent of Child	0	1
Private Individual	1	2
Nottinghamshire Police	652	688
City Schools	286	282
County Schools	0	2
Voluntary Groups	47	2
Nottingham City Homes	28	85

Incidents were reported in all Nottingham electoral wards.

Bridge and St Anns each had over 10% of the total incidents reported.

### Incidents per Month

Month	2004	2005
January	96	75
February	80	105
March	130	102
April	111	117
May	131	101
June	123	75
July	97	136
August	78	90
September	88	68
October	82	80
November	90	80
December	91	55
<b>Total:</b>	<b>1197</b>	<b>1084</b>

Reports were received from Nottingham City Council, schools, the Police, Nottingham City Homes and voluntary groups.

Some data received from a housing association had been depersonalised to the extent that it could not be used.

### Electoral Wards Incidents Reported

	2004	2005	% 2005
Arboretum	99	56	5.17%
Aspley	69	83	7.66%
Basford	34	58	5.35%
Berridge	83	59	5.44%
Bestwood	101	83	7.66%
Bilborough	62	63	5.81%
Bridge (Nottingham)	147	156	14.39%
Bulwell	40	23	2.12%
Bulwell Forest	59	56	5.17%
Clifton North	19	14	1.29%
Clifton South	30	20	1.85%
Dales	49	49	4.52%
Dunkirk and Lenton	27	21	1.94%
Leen Valley	18	33	3.04%
Mapperley	60	35	3.23%
Radford and Park	62	70	6.46%
Sherwood (Nottingham)	38	47	4.34%
St Anns	160	121	11.16%
Wollaton East and Lenton Abbey	21	15	1.38%
Wollaton West	19	22	2.03%

# Nottingham

## *Incident Place*

	<i>2004</i>	<i>2005</i>	<i>2005</i>
Victim's Home	444	315	29.06%
School	273	282	26.01%
Victim's Locality	151	135	12.45%
Street (Not Local)	81	94	8.67%
Shop	55	56	5.17%
Public House/Club	26	23	2.12%
Dwelling	7	22	2.03%
Restaurant/Take Away	27	21	1.94%
Taxi	18	21	1.94%
Police Station/Vehicle	12	17	1.57%
Commercial Premises	13	13	1.20%
Road Traffic Incident	8	13	1.20%
Place of Worship	6	10	0.92%
Residential Care Home	11	8	0.74%
University Grounds	1	6	0.55%
Car Park	3	5	0.46%
College/University	0	4	0.37%
Bus/Train Station	2	4	0.37%
Hospital/Doctors	7	4	0.37%
Hotel/Hostel	7	4	0.37%
Public Park	2	4	0.37%
Public Transport (Bus)	6	4	0.37%
Statutory Agency	4	4	0.37%
Library	1	3	0.28%
Community Centre	3	3	0.28%
Building Site	0	2	0.18%
Public Transport (Tram)	0	2	0.18%
Petrol Station/Garage	5	1	0.09%
Football/Cricket Club	0	1	0.09%
Public Transport (Train)	0	1	0.09%
School Bus/Travelling	16	1	0.09%
Political Party	0	1	0.09%

The majority of incidents (42%) occurred at or near the victim's home.

Over 25% of incidents during 2005 were reported by schools in the city.

# Nottingham

## *Allegations*

	<i>2004</i>	<i>2005</i>	<i>% 2005</i>
Verbal Racist Abuse	779	788	72.69%
Physical Assault	157	135	12.45%
Criminal Damage	154	129	11.90%
Racial Harassment	156	62	5.72%
Threat	49	44	4.06%
Racial Discrimination	23	32	2.95%
Graffiti	20	22	2.03%
Malicious Phone Call	7	21	1.94%
Verbal Religious Abuse	0	18	1.66%
Unpleasant Substances	28	16	1.48%
Religiously Aggravated Harassment	4	10	0.92%
Letter/Written Material	18	10	0.92%
Theft	15	7	0.65%
Arson	3	7	0.65%
Racist Text Message	20	6	0.55%
Robbery	3	6	0.55%
Burglary	8	6	0.55%
Rude Gesture	6	5	0.46%
Racist Incident - No Crime	5	5	0.46%
Possession of Offensive Weapon	3	5	0.46%
Religious Discrimination	7	4	0.37%
Racist Gesture	2	3	0.28%
Attempted Assault	2	3	0.28%
Witness Intimidation	3	3	0.28%
Vehicle Document Fraud	0	3	0.28%
Noise Nuisance	9	2	0.18%
Religiously Offensive Written Material	0	2	0.18%
Ridicule of Culture	4	2	0.18%
Other Allegations	14	20	1.90%

Verbal racist abuse was the most common allegation and was alleged in nearly 73% of incidents.

The number of reported assaults was less during 2005. Of those reported, 25% occurred in the city centre.

# Nottingham

## Victim Origin

The victims during 2005 came from eighteen different ethnic groups.

25% of the victims suffered repeat victimisation during 2005.

There has been a significant increase in victims refusing to provide ethnic origin information.

	2004	2005	% 2005
Asian: Pakistani	194	195	18.88%
Black: Caribbean	184	138	13.36%
White: British	113	128	12.39%
Asian: Indian	99	96	9.29%
Mixed: White and Black Caribbean	82	68	6.58%
Refused to Provide	13	62	6.00%
White: Other White	40	59	5.71%
Black: African	71	49	4.74%
Other Group: Middle East	64	48	4.65%
Not Recorded	34	36	3.48%
No Specific Victim	33	30	2.90%
Not Known	6	21	2.03%
Asian: Other Asian	35	19	1.84%
Other Group: Chinese/Oriental	17	17	1.65%
Mixed: White and Asian	9	14	1.36%
Black: Other Black	13	14	1.36%
Other Group: Other Ethnic Group	16	12	1.16%
White: Irish	7	7	0.68%
Mixed: White and Black African	5	7	0.68%
Asian: Bangladeshi	8	6	0.58%
Mixed: Other Mixed	16	6	0.58%
Traveller	1	1	0.10%

## Victim

Gender	Age	2004	2005	% 2005
Female	0 to 17 years	158	128	12.39%
Female	18 to 35 years	129	118	11.42%
Female	36 to 53 years	67	61	5.91%
Female	54 to 71 years	9	10	0.97%
Female	Adult	70	58	5.61%
Male	0 to 17 years	220	214	20.72%
Male	18 to 35 years	157	163	15.78%
Male	36 to 53 years	95	98	9.49%
Male	54 to 71 years	27	29	2.81%
Male	72 to 89 years	2	2	0.19%
Male	Adult	80	105	10.16%
Not known	0 to 17 years	8	10	0.97%
Not known	Adult	37	37	3.58%

36% of victims during 2005 are female, 59% male and there is no gender information for 5%.

33% of victims are juveniles.

# Nottingham

## Offender Origin

In 2005, alleged offenders came from eighteen different ethnic groups.

33% are known to be White: British, 15% are from minority ethnic groups and no information is known for 52% of alleged offenders.

9% of the alleged offenders in 2005 are known to have repeat offended.

	2004	2005	% 2005
Not Known	466	612	45.64%
White: British	623	438	32.66%
Not Recorded	116	92	6.86%
Black: Caribbean	83	66	4.92%
Mixed: White and Black Caribbean	29	37	2.76%
Asian: Pakistani	61	24	1.79%
Asian: Asian	28	17	1.27%
White: Other White	10	11	0.82%
Asian: Indian	16	8	0.60%
Traveller	0	5	0.37%
Refused to Provide	9	5	0.37%
Mixed: White and Asian	3	4	0.30%
White: Irish	5	4	0.30%
Black: African	3	3	0.22%
Asian: Other Asian	1	3	0.22%
Mixed: White and Black African	3	3	0.22%
Corporate Body	3	2	0.15%
Black: Other Black	0	2	0.15%
Other Group: Other Ethnic Group	2	2	0.15%
Other Group: Chinese/Oriental	1	1	0.07%
Mixed: Other Mixed	0	1	0.07%
Other Group: Middle East	1	1	0.07%

## Offender

Gender	Age	2004	2005	% 2005
Female	0 to 17 years	121	94	7.01%
Female	18 to 35 years	31	18	1.34%
Female	36 to 53 years	16	10	0.75%
Female	54 to 71 years	3	1	0.07%
Female	Adult	47	42	3.13%
Male	0 to 17 years	475	396	29.53%
Male	18 to 35 years	100	93	6.94%
Male	36 to 53 years	34	36	2.68%
Male	54 to 71 years	16	10	0.75%
Male	Adult	244	219	16.33%
Not known	0 to 17 years	105	90	6.71%
Not known	Adult	279	332	24.76%

12% of alleged offenders during 2005 were female, 56% male and for the remaining 32% no gender information is known.

43% of alleged offenders are known to be juveniles, primarily males.

# Nottingham

26% of the incidents reported to the Police in 2005 were categorised as non-crime.

For crimes, the detection rate is down from 36% to 30% in 2005.

## Police Response

	2004	2005	% 2005
Not Detected	310	356	51.74%
Hate Incident Not A Crime	168	177	25.73%
Charged/Summons	133	131	19.04%
Detected No Further Police	39	14	2.03%
Caution/Reprimand/Final Warning	8	9	1.31%
Penalty Notice for Crime	1	1	0.15%
<b>Total</b>	<b>659</b>	<b>688</b>	

## Charges Prosecuted

Charge	2004	2005
Homicide		
Other Assault	4	11
Other Damage	3	5
Other Harassment		
Other	2	5
Other Public Order	7	7
RA Public Order	34	56
RA Assault	11	12
RA Damage	4	5
RA Harassment	6	2
Theft Act		

Seventy five racially aggravated charges were prosecuted during 2005.

Eleven people receive custodial sentences during 2005.

## Outcome of Cases

Outcome	2004	2005
Bind Over		
Community Sentence	16	54
Custodial Sentence	13	11
Deferred Sentence		
Discharge	9	9
Fine	17	14
Other	6	5
Bound over without trial		
Not Guilty	10	10

## Reason for Not Prosecuting

Reason	2004	2005
Witness fails to attend	1	6
Witness refuses to give evidence	5	3
Other insufficient evidence	11	5
Public Interest	2	4
Written Off/Other	1	9

Nine charges were not prosecuted during 2005 because witnesses failed to attend or refused to give evidence. Four charges were not prosecuted for public interest.

## Nottinghamshire Courts

Racist incidents which were identified by the Police or Crown Prosecution Service and which were finalised by the courts during 2005 are analysed below and compared to the figures for 2004.

No. of Defendants		No. of Charges	
2004	2005	2004	2005
144	171	216	264

### Charges Prosecuted

During 2004 the courts finalised cases involving 123 defendants charged with 162 offences. During 2005 the courts finalised cases involving 144 defendants charged with 199 offences.

	Original Police Charge		Charge Prosecuted	
	2004	2005	2004	2005
Racially Aggravated Assault	20	38	23	34
Racially Aggravated Damage	9	9	7	8
Racially Aggravated Harassment	13	5	17	6
Racially Aggravated Public Order	86	102	83	103
Other Assault	11	11	9	14
Other Damage	5	7	7	8
Other Harassment	0	2	0	1
Other Public Order	7	11	11	17
Other	5	7	5	8
Theft Act	3	0	3	0
Charges Added later by CPS	6	7		

### Outcome and Result of Prosecuted Cases

Outcome	Result	
	2004	2005
Guilty Plea	111	144
Guilty After Contest	22	31
Full Time Acquittal	27	24
Half Time Acquittal	4	0
Committal Discharge	1	0
Community Sentence	45	88
Custodial Sentence	24	26
Fine	39	25
Other Sentence	13	19
Discharge	13	17
Not Guilty	31	24

### Charges Dropped

51 charges were dropped in 2004 resulting in the termination of 29 defendant cases. In 2005, 65 charges were dropped resulting in the termination 39 defendant cases.

Reason the Dropping Charges	2004	2005
Public Interest	9	22
Other Insufficient Evidence	21	13
Written Off/Other	5	13
Witness Fails to attend	9	12
Witness Refuses to Give Evidence	7	5

## Racist Incidents Reported By Schools

During 2005, schools in the City and County reported 353 racist incidents involving their pupils, staff or parents. This is a small decrease on the 360 incidents reported during 2004. The number of reported incidents from the different school types is shown below: -

	2004	2005
Primary School	192 (53%)	159 (45%)
Junior School	56 (16%)	76 (22%)
Comprehensive School	52 (14%)	69 (20%)
Infant School	42 (12%)	34 (10%)
Special School	16 (4%)	7 (2%)
Education Authority	1 (<1%)	6 (2%)
Community College	0	2 (1%)
Nursery	1 (<1%)	0
<b>Total</b>	<b>360</b>	<b>353</b>

The analysis of incidents in schools is in three parts based up the age of the victim as follows: -

- Victims Aged 4 years to 11 years
- Victims Aged 12 years to 17 years
- Adult Victims

### Victims Aged 4 Years to 11 Years in Schools

	2004	2005
Number of Racist Incidents	277	263
Number of Different Victims	247	235
Number of Different Alleged Offenders	279	252
Number of Different Schools Reporting Incidents	68	57

Victim Ethnic Origin	2004	2005	Victim Gender	2004	2005
White and Black Caribbean	21%	19%	Male	65%	65%
Black Caribbean	24%	19%	Female	35%	35%
Pakistani	16%	15%			
White British	9%	12%	<b>Victim First Language</b>		
Black African	6%	7%	English	72%	76%
Indian	7%	6%	Punjabi	8%	6%
No Specific Victim	3%	3%	Urdu	5%	6%
White and Asian	1%	3%	Unknown	3%	6%
White: Other	3%	3%	Cantonese	0%	1%
White and Black African	1%	3%	Portuguese	0%	1%
Middle East	3%	3%	Other Languages	12%	4%
Other Ethnic Groups	6%	6%			

<b>Alleged Offender Ethnic Origin</b>	<b>2004</b>	<b>2005</b>	<b>Alleged Offender Age and Gender</b>	<b>2004</b>	<b>2005</b>
White British	69%	65%	Female Aged 4 to 11 years	21%	19%
Black Caribbean	8%	11%	Female Aged 12 to 17	0	1%
White and Black Caribbean	7%	9%	Female Adult	0	1%
Pakistani	8%	5%	Male Aged 4 to 11 years	78%	76%
Indian	2%	2%	Male Aged 12 to 17 years	1%	1%
White and Asian	<1%	2%	Male Adult	1%	2%
White: Other	1%	1%			
Other Ethnic Groups	5%	6%			

### **Place of Incidents**

School Grounds	57%	54%
Classroom	24%	24%
School Building	7%	9%
School Bus/Travelling	3%	1%
School Hall	3%	1%
Dining Hall	1%	3%
Other Places	3%	8%

### **Allegations**

Verbal Racist Abuse	92%	93%
Physical Assault	4%	5%
Religious Discrimination	2%	<1%
Racial Discrimination	2%	5%
Religious Harassment	0	1%
Other Allegations	5%	5%

### **Comments**

Racist incidents reported by primary schools decreased by 14 during 2005 and the number of different schools reporting incidents decreased from 68 to 57. This is a disappointing result. In the County only 4% of primary schools recorded a racist incident during 2005. In the City, the situation was better, with 45% of primary schools reporting one of more racist incidents.

The profile of victims and offenders is similar for the two years. The majority of incidents are happening following disagreements between the children.

Schools reporting and recording racist incidents are treating it seriously and supporting the victims. Work is done to help offenders understand the effect of their actions. In 30% of incidents the offender's parent/carer was informed. Two children were excluded for a period during 2005 compared to 5 children during 2004.

## Victims Aged 12 Years to 16 Years in Schools

	2004	2005
Number of Racist Incidents	54	57
Number of Different Victims	48	57
Number of Different Alleged Offenders	67	60
Number of Different Schools Reporting Incidents	20	19

Victim Ethnic Origin	2004	2005	Victim Gender	2004	2005
Pakistani	21%	18%	Male	55%	52%
Indian	6%	12%	Female	45%	48%
Black Caribbean	17%	12%	<b>Victim First Language</b>		
White British	15%	12%	English	88%	88%
Black African	4%	11%	Urdu	6%	0
White and Black Caribbean	15%	11%	Punjabi	2%	2%
Bangladeshi	0	5%	Unknown	4%	4%
Not Recorded	8%	5%	Iranian	0	2%
Other Ethnic Groups	14%	14%	Bengali	0	2%
			Chickewa	0	2%

### Alleged Offender Ethnic Origin

White British	55%	75%
White and Black Caribbean	5%	10%
Black Caribbean	0	3%
Traveller	0%	3%
Indian	3%	2%
Pakistani	21%	2%
Other Ethnic Groups	16%	5%

### Alleged Offender Age and Gender

Female Aged 4 to 11 years	2%	2%
Female Aged 12 to 17 years	6%	20%
Female Adult	5%	2%
Male Aged 4 to 11 years	5%	3%
Male Aged 12 to 17 years	80%	71%
Male Adult	2%	2%

### Place of Incidents

Classroom	54%	44%
School Grounds	20%	26%
School Bus/Travelling	11%	9%
School Building	7%	14%
Other Places	8%	7%

### Allegations

Verbal Racist Abuse	76%	84%
Physical Assault	9%	11%
Racial Harassment	4%	0
Religious Abuse	0	4%
Other Allegations	17%	14%

### Comments

In 2005 there has been a small increase in the number of incidents reported but the number of different schools reporting incidents has decreased by one.

2005 has seen the proportion of Indian and Bangladeshi victims increase and also the proportion of female victims has again increased. The majority of offenders are male and in 2005 the proportion of offenders from the minority ethnic community has decreased.

Nine offenders were excluded for a fixed period during 2005 compared to four offenders during 2004.

## Adult Victims in Schools

	2004	2005
Number of Racist Incidents	31	37
Number of Different Victims	32	37
Number of Different Alleged Offenders	33	44
Number of Different Schools Reporting Incidents	23	24

Victim Ethnic Origin	2004	2005	Victim Gender	2004	2005
Not Known	13%	22%	Male	22%	19%
Pakistani	16%	14%	Female	56%	43%
Black Caribbean	6%	14%	Not Known	22%	38%
No Specific Victim	19%	14%			
Indian	22%	11%	<b>Victim Occupation</b>		
White: Other	3%	8%	Teacher	34%	49%
Bangladeshi	0	5%	Teaching Assistant	13%	11%
Middle East	3%	5%	Student Teacher	9%	0
Other Ethnic Groups	18%	7%	Midday Supervisor	6%	0
			Parent	9%	11%
			Not Known	19%	24%
			Others	9%	5%

### Alleged Offender Ethnic Origin

White British	55%	61%
White & Black Caribbean	12%	11%
Traveller	0	9%
Other Black	3%	7%
Black Caribbean	9%	5%
Other Ethnic Groups	21%	7%

### Alleged Offender Age and Gender

Female Aged 4 to 11 years	15%	7%
Female Aged 12 to 17 years	3%	25%
Female Adult	9%	5%
Male Aged 4 to 11 years	33%	25%
Male Aged 12 to 17 years	36%	32%
Male Adult	3%	2%

### Place of Incidents

Classroom	36%	54%
School Grounds	0	16%
School Building	13%	8%
School Bus/Travelling	6%	0
Breakfast Club	6%	0
Other Places	39%	22%

### Allegations

Verbal Racist Abuse	81%	73%
Physical Assault	0	11%
Threat	0	8%
Other Allegations	32%	37%

## Comments

The number of incidents involving adult victims has increased. The majority of the victims are school staff. Fourteen offenders were excluded during 2005 compared to two offenders during 2004.

## Agencies Joining the Common Monitoring Project during 2005

Ashfield Development Project  
 Cinderhill Community Association  
 Dovecote Primary and Nursery School  
 Greenfields Community School and Foundation Unit  
 Kirkby Volunteer Centre  
 Newark and Sherwood Homes  
 Nottingham City Homes  
 Riverside Primary School and Early Years Unit  
 Rosslyn Park Primary and Nursery School  
 St John the Baptist C of E Primary School

## Source of Incident Reports

	1998	1999	2000	2001	2002	2003	2004	2005	Total
Afro Caribbean and Asian Forum	20	20	16	21	2	2			81
Ashfield Citizens Advice Bureau					1				1
Ashfield District Council									0
Ashfield Homes Limited							2	5	7
Bassetlaw District Council					1	3			4
Broxtowe Borough Council					2			2	4
Colleges of Further Education		1	2						3
Community Organisations				1	1				2
Crown Prosecution Service		3	115	232	310	187	142	182	1171
East Midlands Ambulance Service					1		1		2
Gedling Borough Council				1	4	4	1	2	12
H M Prisons		2	3	1	5	1			12
Housing Associations	11	1			3	46	82	1	144
Mansfield District Council		2			1				3
Miscellaneous	30	94	86	152	192	222	141	85	1002
National Probation Service				1	2	1			4
New Deal for Communities - NG7					1	1			2
Newark & Sherwood District Council						1	5	1	7
Newark and Sherwood Homes									0
Nottingham & Nottinghamshire REC	20	13	1		1	38	62	7	142
Nottingham City Council - Building Works					2				2
Nottingham City Council - Environmental			2	2		2	1		7
Nottingham City Council - Housing	73	81	126	142	148	140	56	24	790
Nottingham City Council - Leisure Services						1		1	2
Nottingham City Council - Trading Standards			1	3		1	1	1	7
Nottingham City Homes								67	67
Nottingham City Schools			2	1	8	237	289	286	823
Nottingham City Transport			3	9	10	7	1		30
Nottingham Social Services	1		1						2
Nottingham Youth Offending Team									0
Nottinghamshire Fire & Rescue			1						1
Nottinghamshire Library Services								1	1
Nottinghamshire Police	439	698	853	1132	1032	1119	1191	1389	7853
Nottinghamshire Schools	4	4	4	22	45	38	72	68	257
Nottinghamshire Social Services	2	8	1	4	4	1	3	8	31
Places of Worship				1					1
Rushcliffe Borough Council		1		1			2	2	6
Rushcliffe Homes								2	2
<b>Total</b>	<b>600</b>	<b>928</b>	<b>1217</b>	<b>1726</b>	<b>1776</b>	<b>2052</b>	<b>2052</b>	<b>2134</b>	<b>12485</b>

## Training

The project with the help of Nottingham and Nottinghamshire Racial Equality Council and Nottinghamshire Police provides a training seminar to assist agencies to become more active partners in the project and gain a better understanding of the effects of racism.

Training activities were increased during 2005 raising awareness of the project and providing staff of the participating agencies with the confidence to record incidents and provided guidance and help to victims. Ten one day sessions were completed during 2005. This will continue into 2006 and already we have nine planned.

This training is provided free of charge to departments of Nottinghamshire County Council and Nottingham City Council and a nominal charge is made to other agencies to cover costs. For further information contact the System Co-ordinator.

## Further Information and Reports

The Common Monitoring Project Annual Report, because of the diverse population and wide area it covers, can only provide an overview of the different aspects of racist incidents and the people it is affecting.

Copies of this report are available in other formats on request.

The project has developed a comprehensive database which is capable of providing detailed analysis of all data collected by the project.

Any participating agencies or organisation requiring further analysis of the collected data should contact the System Co-ordinator at the address below: -

**Nottingham and Nottinghamshire Racial Equality Council  
67 Lower Parliament Street  
Nottingham NG1 3BB**

**Tel: 0115 9586515  
Fax: 0115 9590624  
E-mail [djohnson@nottsrec.com](mailto:djohnson@nottsrec.com)**