

### Who are the members?

There are a number of people who are involved in the group. A list is included in this leaflet.

### Are the meetings open to the public?

Due to the nature and confidentiality of the issues discussed, meetings are not normally open to the public.

### Who pays for the running of the meetings?

Nottinghamshire Police's Communities Youth and Race Relations department undertake administration and costs.

### Community Group Members

Mr Delroy Brown	ACNA Centre
Ms Julie Cassidy Gosling	Federated Irish Associations, Nottingham and Notts
Mr Lyndon Gibson	Embrace Training and Consultancy
Mr Michael Henry	Human Relations Network
Mr Sabbir Hossein	Bangladesh Centre
Miss Nisha Kaunda	Embrace Training and Consultancy
Mrs Surinder Kaur Samra	Indian Community Centre
Mr Chander Mohan Khera	Indian Community
Mr Mark Kirsch	Jewish Community
Mrs Vicky Botton	Gypsy and Travelling Community
Mr Najeeb Nazir	Pakistan Centre
Mrs Alma Repesa	Refugee Action
Mr Afzal Sadiq	Nottingham and Nottinghamshire Racial Equality Council
Mrs Iris Yu	Nottinghamshire Chinese Community Association
Mr Ijaz Akhtar Syed	African Caribbean and Asian Forum

### How do I find out more information or contact the MEAG?

You can contact the police by

Telephone 0115 9672606

Email [cyrr@nottinghamshire.pnn.police.uk](mailto:cyrr@nottinghamshire.pnn.police.uk)

Writing to CYRR Dept, Sherwood Lodge, Arnold, Notts NG5 8PP

**OR you can contact the Racial Equality Council (REC) by**

Telephone 0115 9586515

Email [mail@nottsrec.com](mailto:mail@nottsrec.com)

Writing to REC, 67 Lower Parliament street, Nottingham NG1 3BB



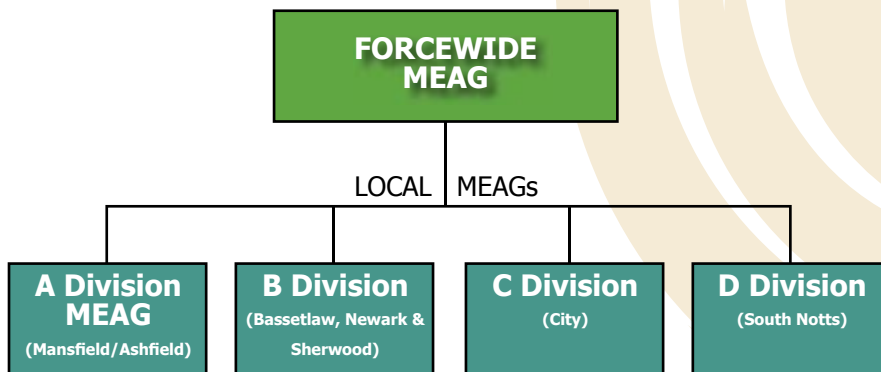
NOTTINGHAMSHIRE  
**POLICE**

Nottinghamshire Police have developed a Minority Ethnic Advisory Group (MEAG) and also a number of other Independent Advisory Groups (IAGs) for other minority/vulnerable groups.

These include:

- Lesbian/Gay/Bisexual/Transgender IAG
- Faith Watch
- Police Disability Action Group
- Stealth IAG (deals with drugs/guns/serious crime.)
- Refugee's and Asylum Seekers Partners IAG
- Community Advisory Group for Learning & Development (Police Training)

For Black and Minority Ethnic Communities the police have an overall MEAG (for the whole of Nottinghamshire) and local area based MEAGs. The local MEAGs meet with local officers to discuss and advise on local policing issues affecting their communities.



Note: B Division has a Minority Consultative Forum, which has representatives from a number of diverse groups including the Gay Community and people with disabilities.

### What is the Minority Ethnic Advisory Group (MEAG)?

The Minority Ethnic Advisory Group (MEAG) is a group that comes together to reflect and discuss the views of various Black and Minority Ethnic (BME) communities. It advises on policing issues that can have a significant community impact on public perception and confidence in the police in Nottinghamshire.

The members, who are considered critical friends to the police, put forward concerns about operational policies and procedures such as stop and search and training of police officers. Input into how the police act and operate within their neighbourhoods is vital in assessing what the public thinks of the service offered by local officers.

Trust and confidence in the police force is essential for effective results. The MEAG helps to continually build community consent by raising the concerns of those communities affected by operational policing.

The group has a direct link to people who help shape police policies. They can express concerns to police representatives to ensure a better understanding of policing diverse communities and potential tensions that may arise.

They also monitor the delivery of the Race Relations Amendment Act and Race Equality Scheme.

### Why did the MEAG form?

The MEAG was developed as a result of one of the recommendations from the inquiry following the tragic murder of Stephen Lawrence in 1993. Police Forces were advised to have an independent advisory group to provide critical and constructive advice to police about policies and procedures, at both operational and strategic levels.

### When did the MEAG in Nottinghamshire start?

Nottinghamshire Police formed a Community and Race Relations Working Group in 1999. This consisted of a number of people from Nottinghamshire Black Minority Ethnic (BME) communities to offer advice on policies and procedures. This group has since developed and expanded to what it is today, the Minority Ethnic Advisory Group, with a broader representation of BME communities, including Refugees, Asylum Seekers and Gypsies and Travellers.

### How often does the group meet?

A meeting is held four times a year. However, if a serious issue arises, special meetings can be called.

### Where are the meetings held?

They take place in community venues across the city and county.